

Red Rock Plaza

1385 Washington St. (Route 1) No. Attleboro, MA 02760

FOR LEASE



19,844 SF 1st Floor (Subdividable)

Highly visible retail box located on heavily traveled Rt. 1 ADT 22,000
Rt. 295 ADT 53,000

National co-tenants include Michael's, Savers, PetSmart

Center shares signalized access with Walmart Supercenter, Lowe's, Target, Best Buy, Dick's

Facade and pylon top panel available

New facade under construction

Zoning: C60 (Commercial District)

UNDER CONSTRUCTION

No warranty or representation, expressed or implied, is made as to the accuracy of the information contained herein, and same is submitted subject to errors, omissions, change in price, rental or other conditions, or withdrawal without notice.

CONTACT: Don Mace
Vice President of Retail Brokerage
DMace@KeyPointPartners.com
781.418.6243

Rob Grady
Vice President of Retail Brokerage
RGrady@KeyPointPartners.com
781.418.6267

KEYPOINT
PARTNERS
 KeyPointPartners.com

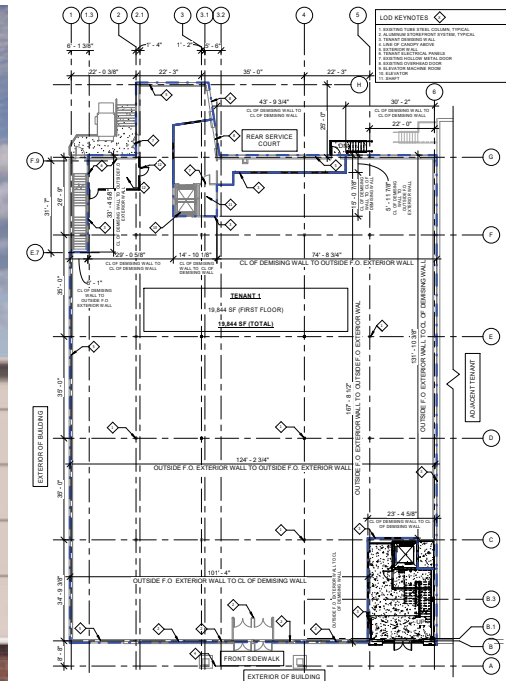
Red Rock Plaza

FOR LEASE

1385 Washington St. (Route 1) No. Attleboro, MA 02760



Dedicated 2nd floor entrance



19,844 SF 1st Floor
(Subdividable)

Floor plans available on request

OVERVIEW

First floor anchor space in prominent shopping center centrally positioned along the busy Route 1 retail corridor in North Attleboro, a regional trade area with 4.6 million square feet of retail space. Key nearby tenants include Marshalls, Ulta Beauty, Dick's Sporting Goods, DSW, BJ's Wholesale Club, Market Basket, Home Depot, Raymour & Flanagan, Burlington, and many more.

2025 DEMOGRAPHICS	3 Mile	5 Mile	7 Mile	ADDITIONAL INFO.	
POPULATION	48,998	185,153	294,080	TOTAL GLA	121,077 SF
NUMBER OF HH	19,510	74,476	119,277	PARKING	539 SPACES
AVERAGE HH INCOME	\$131,079	\$107,106	\$114,717	TRAFFIC COUNT	22,000 ADT (Rt 1) 53,000 ADT (Rt. 295)

No warranty or representation, expressed or implied, is made as to the accuracy of the information contained herein, and same is submitted subject to errors, omissions, change in price, rental or other conditions, or withdrawal without notice.

CONTACT: Don Mace
Vice President of Retail Brokerage
DMace@KeyPointPartners.com
781.418.6243

Rob Grady
Vice President of Retail Brokerage
RGrady@KeyPointPartners.com
781.418.6267



Red Rock Plaza

FOR LEASE

1385 Washington St. (Rt. 1) No. Attleboro, MA 02760



CONTACT: Don Mace
Vice President of Retail Brokerage
DMace@KeyPointPartners.com
781.418.6243

Rob Grady
Vice President of Retail Brokerage
RGrady@KeyPointPartners.com
781.418.6267

KEYPOINT
PARTNERS
KeyPointPartners.com



Red Rock Plaza

FOR LEASE

1385 Washington St. (Rt. 1) No. Attleboro, MA 02760

Emerald Square Mall
JCPenney macys

Red Rock Plaza
19,844 SF 1st Floor (Subdividable)
Michaels
PETS M A R T S O V E R S

Target

Best Buy

Walmart SUPERCENTER

Ninety Nine

Blinds To Go

T-Mobile

Vitamin Shoppe

Lowes
Improving Home Improvement

Dick's
Sporting Goods

DSW

Raymour & Flanagan

Planet Fitness

Guitar Center

Planet Fitness

PLAY IT AGAIN SPORTS

FedEx Office

LAUNCH

BJ's RESTAURANT BREWHOUSE

RAYMOUR & FLANAGAN

DOLLAR TREE

PATEL BROTHERS
"Celebrating Our Food...Our Culture"

Chris Gasbarro's Fine Wine & Spirits

verizon wireless

OLD NAVY

Marshalls

five BELOW

LONGHORN

SKECHERS

Panera

LENSCRAFTERS

OSH KOSH B'GOSH

ULTA BEAUTY

carter's

GameStop

ME Massage Envy

Interstate 295 53,000 ADT
Exit 1

Rt. 1 22,000 ADT

North Attleboro

Attleboro

1/2 Mile

No warranty or representation, expressed or implied, is made as to the accuracy of the information contained herein, and same is submitted subject to errors, omissions, change in price, rental or other conditions, or withdrawal without notice.

CONTACT: Don Mace
Vice President of Retail Brokerage
DMace@KeyPointPartners.com
781.418.6243

Rob Grady
Vice President of Retail Brokerage
RGrady@KeyPointPartners.com
781.418.6267



22,826 SF 2nd Floor

Highly visible retail space located on heavily traveled Rt. 1 ADT 22,000
Rt. 295 ADT 53,000

National co-tenants include Michael's, Savers, PetSmart

Center shares signalized access with Walmart Supercenter, Lowe's, Target, Best Buy, Dick's

Facade and pylon panel available

New facade under construction

Zoning: C60 (Commercial District)

No warranty or representation, expressed or implied, is made as to the accuracy of the information contained herein, and same is submitted subject to errors, omissions, change in price, rental or other conditions, or withdrawal without notice.

UNDER CONSTRUCTION

CONTACT: Don Mace
Vice President of Retail Brokerage
DMace@KeyPointPartners.com
781.418.6243

Rob Grady
Vice President of Retail Brokerage
RGrady@KeyPointPartners.com
781.418.6267

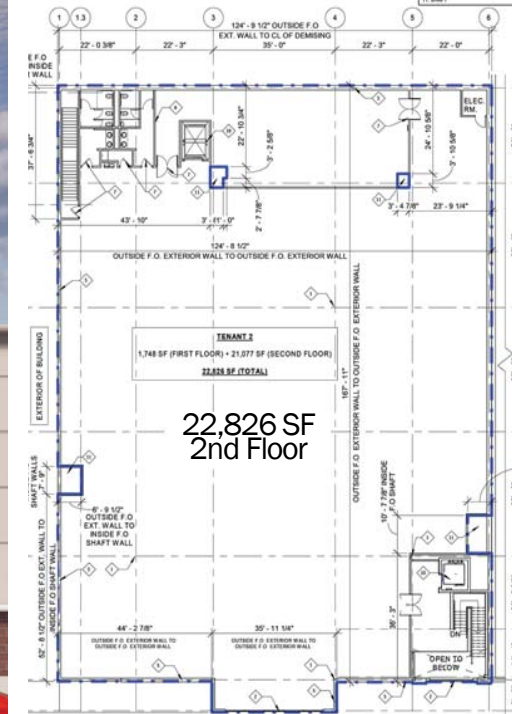
Red Rock Plaza

1385 Washington St. (Route 1) No. Attleboro, MA 02760

SHOWROOM FOR LEASE



Dedicated 2nd floor entrance



Floor plans available on request

OVERVIEW

Second floor showroom in prominent shopping center centrally positioned along the busy Route 1 retail corridor in North Attleboro, a regional trade area with 4.6 million square feet of retail space. Key nearby tenants include Marshalls, Ulta Beauty, Dick's Sporting Goods, DSW, BJ's Wholesale Club, Market Basket, Home Depot, Raymour & Flanagan, Burlington, and many more.

2025 DEMOGRAPHICS	3 Mile	5 Mile	7 Mile	ADDITIONAL INFO.	
POPULATION	48,998	185,153	294,080	TOTAL GLA	121,077 SF
NUMBER OF HH	19,510	74,476	119,277	PARKING	539 SPACES
AVERAGE HH INCOME	\$131,079	\$107,106	\$114,717	TRAFFIC COUNT	22,000 ADT (Rt 1) 53,000 ADT (Rt. 295)

No warranty or representation, expressed or implied, is made as to the accuracy of the information contained herein, and same is submitted subject to errors, omissions, change in price, rental or other conditions, or withdrawal without notice.

CONTACT: Don Mace
Vice President of Retail Brokerage
DMace@KeyPointPartners.com
781.418.6243

Rob Grady
Vice President of Retail Brokerage
RGrady@KeyPointPartners.com
781.418.6267



Red Rock Plaza

1385 Washington St. (Rt. 1) No. Attleboro, MA 02760

SHOWROOM FOR LEASE



CONTACT: Don Mace
Vice President of Retail Brokerage
DMace@KeyPointPartners.com
781.418.6243

Rob Grady
Vice President of Retail Brokerage
RGrady@KeyPointPartners.com
781.418.6267

Red Rock Plaza

1385 Washington St. (Rt. 1) No. Attleboro, MA 02760

SHOWROOM FOR LEASE

Red Rock Plaza
22,826 SF 2nd Floor

Emerald Square Mall
JCPenney macys

Target

Michael's
Where Creativity Happens

PETSMART **SAVERS**

LAUNCH

BEST BUY

planet fitness **Guitar Center** **ALMAZ**

PLAY IT AGAIN SPORTS **FedEx Office**

Walmart SUPERCENTER

Ninety Nine

Chris Gasbarro's Fine Wine & Spirits

verizon wireless

BLINDS To Go **T-Mobile** **Vitamin Shoppe**

LOWE'S **DICK'S** **DSW**

RAYMOUR & FLAVIGAN **costco** **walgreens**

OLD NAVY **Marshalls** **five BELOW** **SKECHERS**

LONGHORN **Panera** **LENSCRAFTERS** **ULTA BEAUTY**

OSH KOSH B'GOSH **GameStop** **ME Massage Envy**

RAYMOUR & FLAVIGAN **DOLLAR TREE** **PATEL BROTHERS**

BJ'S RESTAURANT BREWHOUSE

53,000 ADT
Exit 1
North Attleboro

1
22,000 ADT

1/2 Mile

Attleboro

No warranty or representation, expressed or implied, is made as to the accuracy of the information contained herein, and same is submitted subject to errors, omissions, change in price, rental or other conditions, or withdrawal without notice.

CONTACT: Don Mace
Vice President of Retail Brokerage
DMace@KeyPointPartners.com
781.418.6243

Rob Grady
Vice President of Retail Brokerage
RGrady@KeyPointPartners.com
781.418.6267

Red Rock Plaza

1385 Washington St. (Rt. 1) No. Attleboro, MA 02760

FOR LEASE

6,175 SF Pad



AVAILABLE 6,175 SF Pad

PROPERTY HIGHLIGHTS

Prominent shopping center anchored by Michaels, PetSmart, and Savers, well-positioned on the "50-yard line" of the busy Route 1 retail corridor, which encompasses 4.6 million square feet of retail space

The center is flanked by Best Buy and Target, and shares access to Walmart Supercenter, Lowe's Home Improvement, and Dick's Sporting Goods - other nearby tenants include Marshalls, Ulta Beauty, DSW, BJ's, Market Basket, Home Depot, and many more

The highly visible outparcel is situated at a signalized entrance and faces Route 1

Fully built-out restaurant - space plans available upon request

No warranty or representation, expressed or implied, is made as to the accuracy of the information contained herein, and same is submitted subject to errors, omissions, change in price, rental or other conditions, or withdrawal without notice.

CONTACT: Don Mace
Vice President of Retail Brokerage
DMace@KeyPointPartners.com
781.418.6243

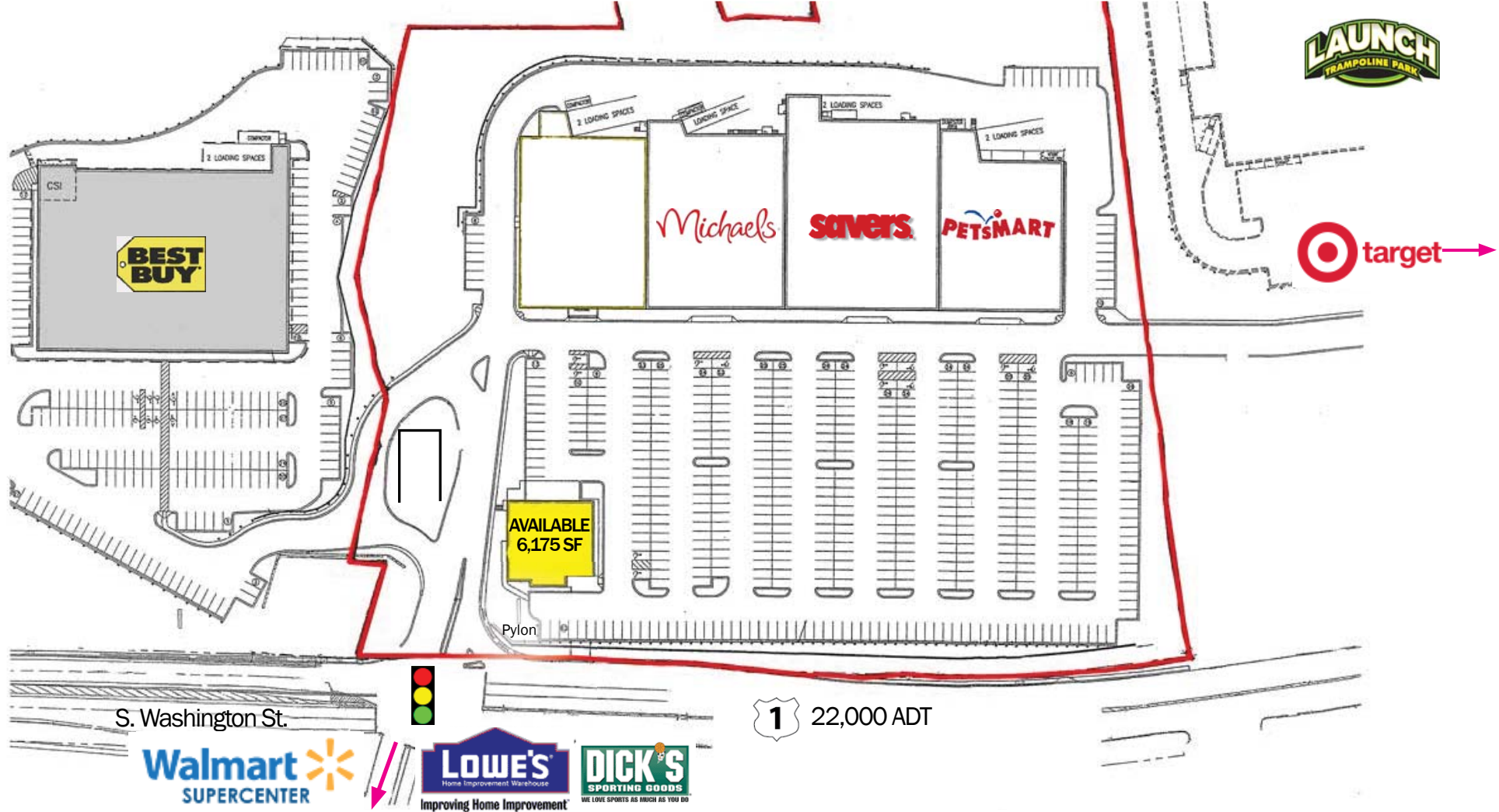
Rob Grady
Vice President of Retail Brokerage
RGrady@KeyPointPartners.com
781.418.6267

Red Rock Plaza

1385 Washington St. (Rt. 1) No. Attleboro, MA 02760

FOR LEASE

6,175 SF Pad



2025 DEMOGRAPHICS	3 Mile	5 Mile	7 Mile	ADDITIONAL INFO.	
POPULATION	48,998	185,153	294,080	TOTAL GLA	121,045 SF
NUMBER OF HH	19,510	74,476	119,277	PARKING	539 SPACES
AVERAGE HH INCOME	\$131,079	\$107,106	\$114,717	TRAFFIC COUNT	25,681 ADT (Rte 1)

No warranty or representation, expressed or implied, is made as to the accuracy of the information contained herein, and same is submitted subject to errors, omissions, change in price, rental or other conditions, or withdrawal without notice.

CONTACT: Don Mace
 Vice President of Retail Brokerage
 DMace@KeyPointPartners.com
 781.418.6243

Rob Grady
 Vice President of Retail Brokerage
 RGrady@KeyPointPartners.com
 781.418.6267

KEYPOINT
 PARTNERS
 KeyPointPartners.com