

Meadowbrook Shopping Center

2458 Warwick Ave, Warwick, RI

FOR LEASE

2,820 SF

PROPERTY HIGHLIGHTS

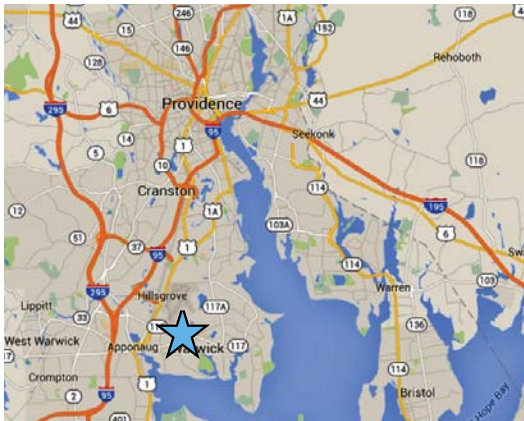
Meadowbrook Shopping Center is located in the major retail corridor within the Meadowbrook/ Warwick Neck area of Warwick, RI

Adjacent to Super Stop & Shop, the highest volume full service supermarket in the trade area

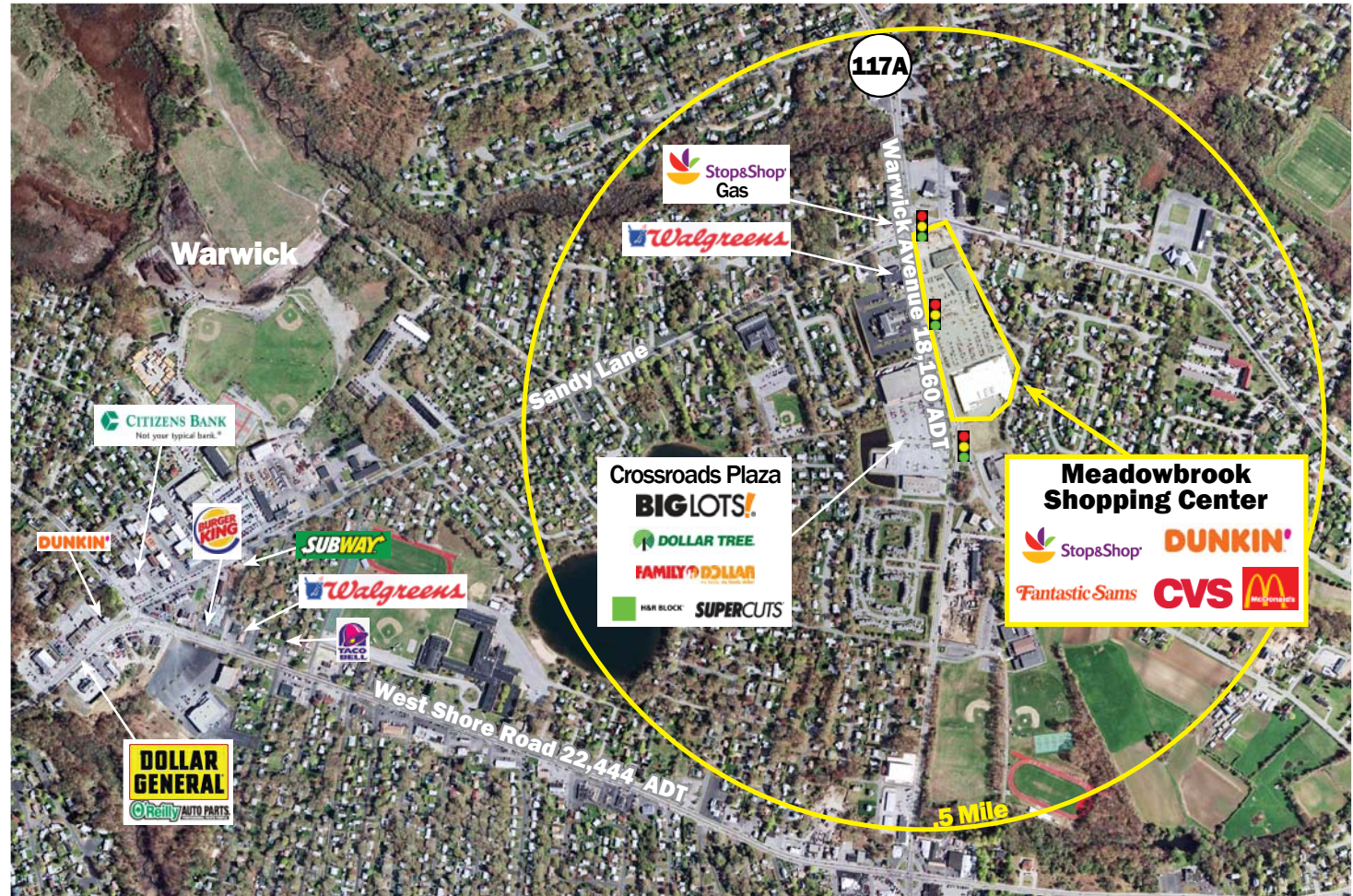
Densely populated trade area with 134,577 people within 5.0 miles

Heavily traveled segment of Warwick Avenue with average daily traffic count of 18,160 vehicles

Pylon panel available



No warranty or representation, expressed or implied, is made as to the accuracy of the information contained herein, and same is submitted subject to errors, omissions, change in price, rental or other conditions, or withdrawal without notice.



| 2023 DEMOGRAPHICS | 1 Mile | 3 Mile | 5 Mile | ADDITIONAL INFO. |
|-------------------|-----------|-----------|-----------|-------------------------------------------|
| POPULATION | 10,896 | 51,731 | 134,577 | PARKING Ample |
| NUMBER OF HH | 4,557 | 22,150 | 58,041 | TRAFFIC COUNT 18,160 ADT - (Warwick Ave.) |
| AVERAGE HH INCOME | \$102,890 | \$112,354 | \$117,217 | |

CONTACT: Don Mace
 Vice President of Retail Brokerage
 DMace@KeyPointPartners.com
 781.418.6243

Meadowbrook Shopping Center

2458 Warwick Ave, Warwick, RI

FOR LEASE

2,820 SF

Tenant

- 1 McDonald's
- 2 M. Edward Jewelers
- 3 Fantastic Sams
- 4 Available
- 5 Westbay Wine & Spirits
- 6 Dunkin'
- 7 Stop & Shop



No warranty or representation, expressed or implied, is made as to the accuracy of the information contained herein, and same is submitted subject to errors, omissions, change in price, rental or other conditions, or withdrawal without notice.

CONTACT: Don Mace
Vice President of Retail Brokerage
DMace@KeyPointPartners.com
781.418.6243