

Red Rock Plaza

1385 Washington St. (Route 1) No. Attleboro, MA 02760

FOR LEASE



19,844 SF 1st Floor (Subdividable)

Highly visible retail box located on heavily traveled Rt. 1 ADT 22,000
Rt. 295 ADT 53,000

National co-tenants include Michael's, Savers, PetSmart

Center shares signalized access with Walmart Supercenter, Lowe's, Target, Best Buy, Dick's

Facade and pylon top panel available

New facade under construction

Zoning: C60 (Commercial District)

UNDER CONSTRUCTION

No warranty or representation, expressed or implied, is made as to the accuracy of the information contained herein, and same is submitted subject to errors, omissions, change in price, rental or other conditions, or withdrawal without notice.

CONTACT: Don Mace
Vice President of Retail Brokerage
DMace@KeyPointPartners.com
781.418.6243

Rob Grady
Vice President of Retail Brokerage
RGrady@KeyPointPartners.com
781.418.6267

KEYPOINT
PARTNERS
KeyPointPartners.com



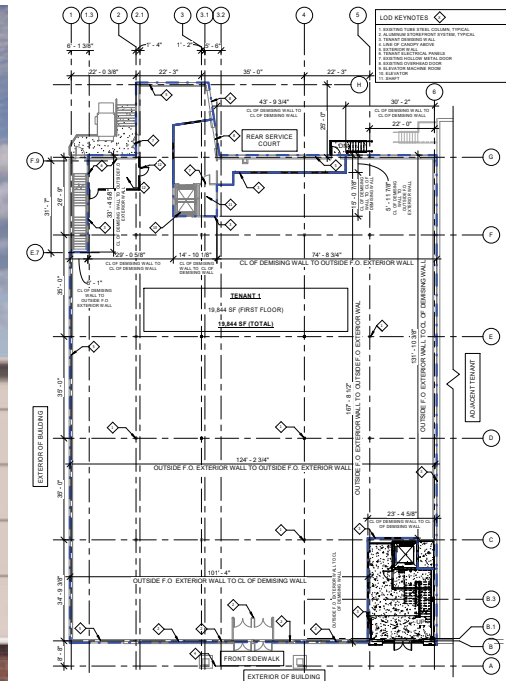
Red Rock Plaza

FOR LEASE

1385 Washington St. (Route 1) No. Attleboro, MA 02760



Dedicated 2nd floor entrance



19,844 SF 1st Floor
(Subdividable)

Floor plans available on request

OVERVIEW

First floor anchor space in prominent shopping center centrally positioned along the busy Route 1 retail corridor in North Attleboro, a regional trade area with 4.6 million square feet of retail space. Key nearby tenants include Marshalls, Ulta Beauty, Dick's Sporting Goods, DSW, BJ's Wholesale Club, Market Basket, Home Depot, Raymour & Flanagan, Burlington, and many more.

2025 DEMOGRAPHICS	3 Mile	5 Mile	7 Mile	ADDITIONAL INFO.	
POPULATION	48,998	185,153	294,080	TOTAL GLA	121,077 SF
NUMBER OF HH	19,510	74,476	119,277	PARKING	539 SPACES
AVERAGE HH INCOME	\$131,079	\$107,106	\$114,717	TRAFFIC COUNT	22,000 ADT (Rt 1) 53,000 ADT (Rt. 295)

No warranty or representation, expressed or implied, is made as to the accuracy of the information contained herein, and same is submitted subject to errors, omissions, change in price, rental or other conditions, or withdrawal without notice.

CONTACT: Don Mace
Vice President of Retail Brokerage
DMace@KeyPointPartners.com
781.418.6243

Rob Grady
Vice President of Retail Brokerage
RGrady@KeyPointPartners.com
781.418.6267



Red Rock Plaza

FOR LEASE

1385 Washington St. (Rt. 1) No. Attleboro, MA 02760



CONTACT: Don Mace
Vice President of Retail Brokerage
DMace@KeyPointPartners.com
781.418.6243

Rob Grady
Vice President of Retail Brokerage
RGrady@KeyPointPartners.com
781.418.6267

KEYPOINT
PARTNERS
KeyPointPartners.com



Red Rock Plaza

1385 Washington St. (Rt. 1) No. Attleboro, MA 02760

FOR LEASE

Red Rock Plaza
19,844 SF 1st Floor
(Subdividable)

Logos for stores in Red Rock Plaza:
Michael's
PETS MART
SAVERS

Logos for stores in Emerald Square Mall:
JCPenney
macys

Logos for stores in the surrounding area:
Target
LAUNCH
BEST BUY
Walmart SUPERCENTER
Ninety Nine
Chris Gasbarro's Fine Wine & Spirits
verizon wireless
BLINDS To Go
T-Mobile
Vitamin Shoppe
Lowe's
DICK'S
DSW
RAYMOUR & FLANGAN Furniture
DOLLAR TREE
PATEL BROTHERS
RAYMOUR & FLANGAN Furniture
BJ's RESTAURANT BREWHOUSE
OLD NAVY
Marshalls
five BELOW
SKECHERS
Panera BREAD
LENSCRAFTERS
OSH KOSH B'gosh
ULTA BEAUTY
carter's
GameStop
ME Massage Envy
planet fitness
Guitar Center
PLAY IT AGAIN SPORTS
FedEx Office

Map Labels:
Interstate 295
53,000 ADT
Exit 1
North Attleboro
1
1/2 Mile
22,000 ADT
Attleboro

No warranty or representation, expressed or implied, is made as to the accuracy of the information contained herein, and same is submitted subject to errors, omissions, change in price, rental or other conditions, or withdrawal without notice.

CONTACT: Don Mace
Vice President of Retail Brokerage
DMace@KeyPointPartners.com
781.418.6243

Rob Grady
Vice President of Retail Brokerage
RGrady@KeyPointPartners.com
781.418.6267