

# Red Rock Plaza

1385 Washington St. (Route 1) No. Attleboro, MA 02760

# FOR LEASE



## 19,844 SF 1st Floor (Subdividable)

Highly visible retail box located on heavily traveled Rt. 1 ADT 22,000  
Rt. 295 ADT 53,000

National co-tenants include Michael's, Savers, PetSmart

Center shares signalized access with Walmart Supercenter, Lowe's, Target, Best Buy, Dick's

Facade and pylon top panel available

New facade under construction

Zoning: C60 (Commercial District)

## UNDER CONSTRUCTION

No warranty or representation, expressed or implied, is made as to the accuracy of the information contained herein, and same is submitted subject to errors, omissions, change in price, rental or other conditions, or withdrawal without notice.

**CONTACT:** Don Mace  
Vice President of Retail Brokerage  
DMace@KeyPointPartners.com  
781.418.6243

Rob Grady  
Vice President of Retail Brokerage  
RGrady@KeyPointPartners.com  
781.418.6267

**KEYPOINT**  
PARTNERS  
KeyPointPartners.com



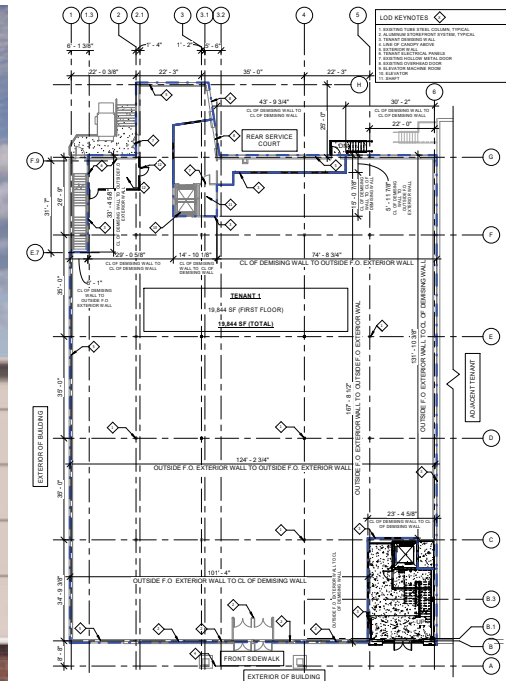
# Red Rock Plaza

# FOR LEASE

1385 Washington St. (Route 1) No. Attleboro, MA 02760



Dedicated 2nd floor entrance



19,844 SF 1st Floor  
(Subdividable)

Floor plans available on request

## OVERVIEW

First floor anchor space in prominent shopping center centrally positioned along the busy Route 1 retail corridor in North Attleboro, a regional trade area with 4.6 million square feet of retail space. Key nearby tenants include Marshalls, Ulta Beauty, Dick's Sporting Goods, DSW, BJ's Wholesale Club, Market Basket, Home Depot, Raymour & Flanagan, Burlington, and many more.

2025 DEMOGRAPHICS	3 Mile	5 Mile	7 Mile	ADDITIONAL INFO.	
POPULATION	48,998	185,153	294,080	TOTAL GLA	121,077 SF
NUMBER OF HH	19,510	74,476	119,277	PARKING	539 SPACES
AVERAGE HH INCOME	\$131,079	\$107,106	\$114,717	TRAFFIC COUNT	22,000 ADT (Rt 1) 53,000 ADT (Rt. 295)

No warranty or representation, expressed or implied, is made as to the accuracy of the information contained herein, and same is submitted subject to errors, omissions, change in price, rental or other conditions, or withdrawal without notice.

**CONTACT:** Don Mace  
Vice President of Retail Brokerage  
DMace@KeyPointPartners.com  
781.418.6243

Rob Grady  
Vice President of Retail Brokerage  
RGrady@KeyPointPartners.com  
781.418.6267



# Red Rock Plaza

# FOR LEASE

1385 Washington St. (Rt. 1) No. Attleboro, MA 02760



**CONTACT:** Don Mace  
Vice President of Retail Brokerage  
DMace@KeyPointPartners.com  
781.418.6243

Rob Grady  
Vice President of Retail Brokerage  
RGrady@KeyPointPartners.com  
781.418.6267

**KEYPOINT**  
PARTNERS  
KeyPointPartners.com



# Red Rock Plaza

# FOR LEASE

1385 Washington St. (Rt. 1) No. Attleboro, MA 02760

**Emerald Square Mall**  
JCPenney macys

**Red Rock Plaza**  
19,844 SF 1st Floor (Subdividable)  
Michaels  
PETS M A R T   S O V E R S

**Target**

**Best Buy**

**Walmart SUPERCENTER**

**Ninety Nine**

**Blinds To Go**

**T-Mobile**

**Vitamin Shoppe**

**Lowes**  
Improving Home Improvement

**Dick's**  
Sporting Goods

**DSW**

**Raymour & Flanagan**

**Planet Fitness**

**Guitar Center**

**Planet Fitness**

**PLAY IT AGAIN SPORTS**

**FedEx Office**

**LAUNCH**

**BJ's RESTAURANT BREWHOUSE**

**RAYMOUR & FLANAGAN**

**DOLLAR TREE**

**PATEL BROTHERS**  
"Celebrating Our Food... Our Culture"

**Chris Gasbarro's Fine Wine & Spirits**

**verizon wireless**

**OLD NAVY**

**Marshalls**

**five BELOW**

**LONGHORN**

**SKECHERS**

**Panera**

**LENSCRAFTERS**

**OSH KOSH B'GOSH**

**ULTA BEAUTY**

**carter's**

**GameStop**

**ME Massage Envy**

**Interstate 295** 53,000 ADT  
Exit 1

**Rt. 1** 22,000 ADT

North Attleboro

Attleboro

1/2 Mile

No warranty or representation, expressed or implied, is made as to the accuracy of the information contained herein, and same is submitted subject to errors, omissions, change in price, rental or other conditions, or withdrawal without notice.

**CONTACT:** Don Mace  
Vice President of Retail Brokerage  
DMace@KeyPointPartners.com  
781.418.6243

Rob Grady  
Vice President of Retail Brokerage  
RGrady@KeyPointPartners.com  
781.418.6267



## 22,826 SF 2nd Floor

Highly visible retail space located on heavily traveled Rt. 1 ADT 22,000  
Rt. 295 ADT 53,000

National co-tenants include Michael's, Savers, PetSmart

Center shares signalized access with Walmart Supercenter, Lowe's, Target, Best Buy, Dick's

Facade and pylon panel available

New facade under construction

Zoning: C60 (Commercial District)

No warranty or representation, expressed or implied, is made as to the accuracy of the information contained herein, and same is submitted subject to errors, omissions, change in price, rental or other conditions, or withdrawal without notice.

## UNDER CONSTRUCTION

**CONTACT:** Don Mace  
Vice President of Retail Brokerage  
DMace@KeyPointPartners.com  
781.418.6243

Rob Grady  
Vice President of Retail Brokerage  
RGrady@KeyPointPartners.com  
781.418.6267

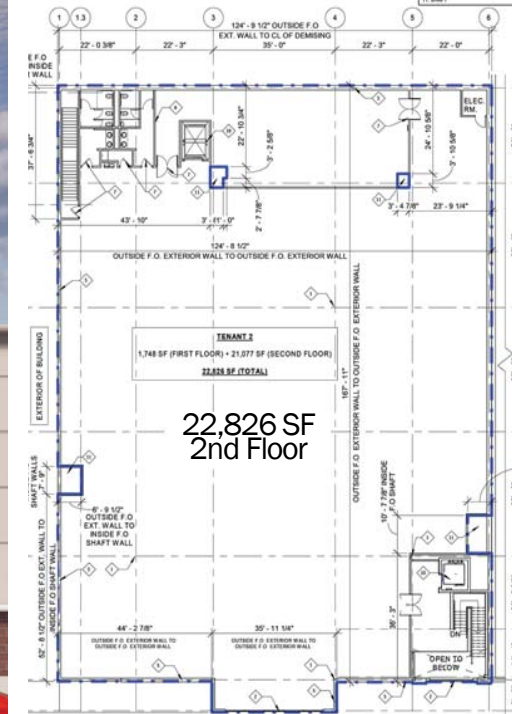
# Red Rock Plaza

1385 Washington St. (Route 1) No. Attleboro, MA 02760

# SHOWROOM FOR LEASE



Dedicated 2nd floor entrance



Floor plans available on request

## OVERVIEW

Second floor showroom in prominent shopping center centrally positioned along the busy Route 1 retail corridor in North Attleboro, a regional trade area with 4.6 million square feet of retail space. Key nearby tenants include Marshalls, Ulta Beauty, Dick's Sporting Goods, DSW, BJ's Wholesale Club, Market Basket, Home Depot, Raymour & Flanagan, Burlington, and many more.

2025 DEMOGRAPHICS	3 Mile	5 Mile	7 Mile	ADDITIONAL INFO.	
POPULATION	48,998	185,153	294,080	TOTAL GLA	121,077 SF
NUMBER OF HH	19,510	74,476	119,277	PARKING	539 SPACES
AVERAGE HH INCOME	\$131,079	\$107,106	\$114,717	TRAFFIC COUNT	22,000 ADT (Rt 1) 53,000 ADT (Rt. 295)

No warranty or representation, expressed or implied, is made as to the accuracy of the information contained herein, and same is submitted subject to errors, omissions, change in price, rental or other conditions, or withdrawal without notice.

**CONTACT:** Don Mace  
Vice President of Retail Brokerage  
DMace@KeyPointPartners.com  
781.418.6243

Rob Grady  
Vice President of Retail Brokerage  
RGrady@KeyPointPartners.com  
781.418.6267



# Red Rock Plaza

1385 Washington St. (Rt. 1) No. Attleboro, MA 02760

# SHOWROOM FOR LEASE



**CONTACT:** Don Mace  
Vice President of Retail Brokerage  
DMace@KeyPointPartners.com  
781.418.6243

Rob Grady  
Vice President of Retail Brokerage  
RGrady@KeyPointPartners.com  
781.418.6267

# Red Rock Plaza

# SHOWROOM FOR LEASE

1385 Washington St. (Rt. 1) No. Attleboro, MA 02760

**Emerald Square Mall**  
JCPenney macys

**Red Rock Plaza**  
22,826 SF 2nd Floor  
Michael's  
PETS M A R T  
S O V E R S

**Target**

**LAUNCH**

**BEST BUY**

**planet fitness**  
PLAY IT AGAIN SPORTS

**Guitar Center**  
FedEx Office

**Walmart SUPERCENTER**

**Ninety Nine**

**BJ's RESTAURANT BREWHOUSE**

**RAYMOUR & FLAVIGAN FURNITURE**

**DOLLAR TREE**

**PATEL BROTHERS**  
"Celebrating Our Food...Our Culture"

**Chris Gasbarro's Fine Wine & Spirits**

**verizon wireless**

**OLD NAVY**

**Marshalls**

**five BELOW**

**LONGHORN RESTAURANT**

**SKECHERS**

**Panera BREAD**

**LENSCRAFTERS**

**OSHKOSH Biggosh**

**ULTA BEAUTY**

**carter's**

**GameStop**

**ME Massage Envy**

**BLINDS To Go**

**T-Mobile**

**Vitamin Shoppe**

**LOWE'S**  
Improving Home Improvement

**DICK'S Sporting Goods**

**DSW**

**RAYMOUR & FLAVIGAN FURNITURE**

**costco**

**Walmart SUPERCENTER**

**Interstate 295** 53,000 ADT  
**Exit 1**

**Rt. 1** 22,000 ADT

North Attleboro

Attleboro

1/2 Mile

No warranty or representation, expressed or implied, is made as to the accuracy of the information contained herein, and same is submitted subject to errors, omissions, change in price, rental or other conditions, or withdrawal without notice.

**CONTACT:** Don Mace  
Vice President of Retail Brokerage  
DMace@KeyPointPartners.com  
781.418.6243

Rob Grady  
Vice President of Retail Brokerage  
RGrady@KeyPointPartners.com  
781.418.6267