



Meadow Glen

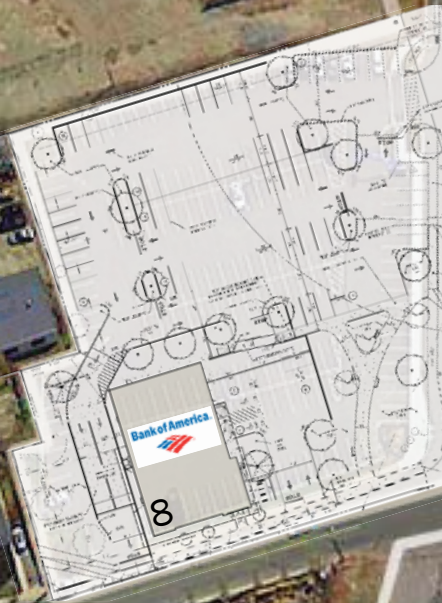
- Premier urban core power center
- One of only 5 coveted Wegman’s-anchored centers in greater Boston
- Highly visible location on Mystic Valley Parkway (Route 16)
- Easy access from I-93 and Route 28
- Hanover Mystic River: new 350-unit residential project directly across from center
- Fully leased - Bank of America pad coming soon



CONTACT: Don Mace, Vice President of Retail Brokerage
DMace@KeyPointPartners.com
781.418.6243



1 Marshalls	30,100 SF
2 Petco	20,372 SF
3 Dick's Sporting Goods	50,311 SF
4 Wegmans	116,595 SF
5 Kohls	69,132 SF
6 Verizon	2,750 SF
7 Elements Dental	2,500 SF
8 Bank of America (Coming Soon)	5,525 SF



Mystic Valley Parkway 55,000 ADT



Locust Street

Pylon

HANOVER MYSTIC RIVER
350-unit residential project
by The Hanover Co.



Meadow Glen

Meadow Glen is a 300,000 SF shopping center with a highly visible location on Route 16 just east of the Mystic River and Interstate 93. The center is easily accessible by both car and public transportation. A major redevelopment has created one of the area's premier power centers. Wegmans (one of only five in the Boston area), DICK's Sporting Goods and Petco have joined Kohl's and Marshalls. Exterior updates include new storefront facades throughout, a complete renovation of the parking area—including site lighting and landscaping, and updated exterior signage.

2023 Demographics

	1 mile	2 miles	3 miles
POPULATION	35,898	169,709	366,079
NUMBER OF HH	15,339	70,307	153,238
AVERAGE HH INCOME	\$149,334	\$152,468	\$158,965
DAYTIME POPULATION	15,931	68,096	167,096

Traffic Counts

Route 16: 43,116 ADT
I-93: 189,310 ADT

Location

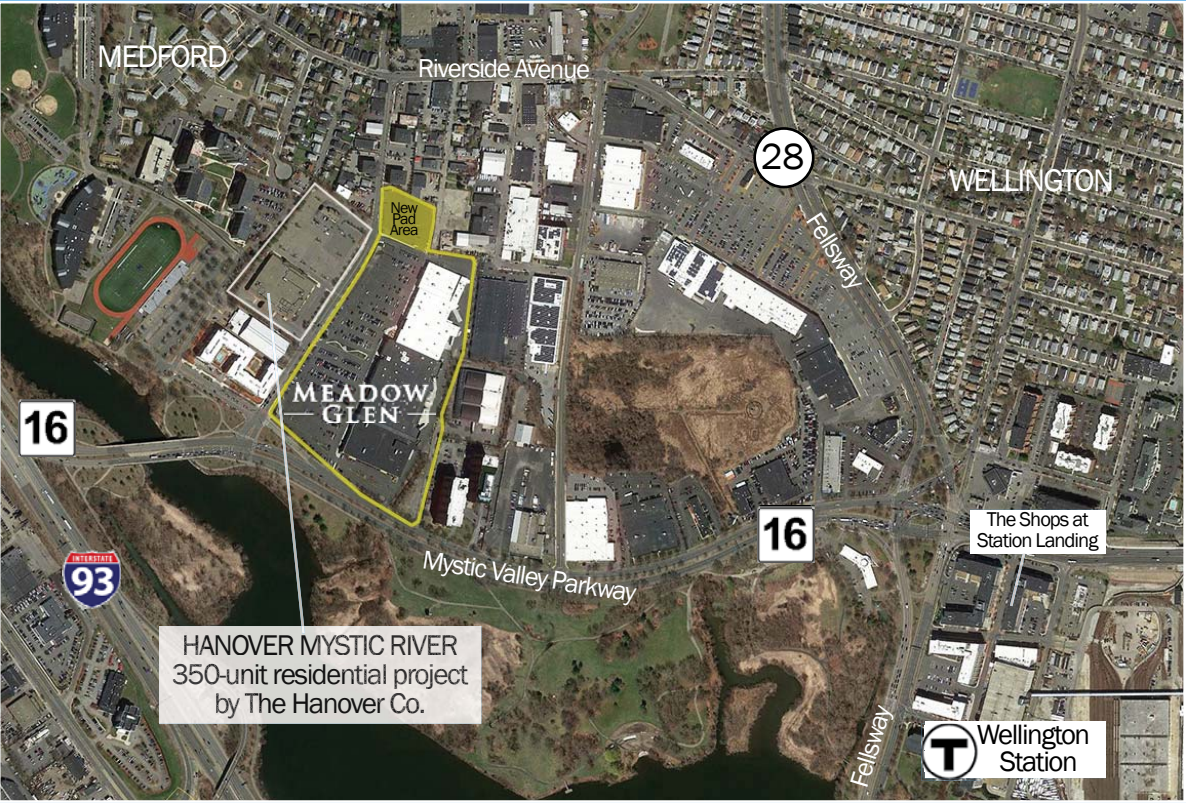
Located on Mystic Valley Parkway (Route 16)

Easy access from Interstate 93 via Route 16 and from Route 28

Serves Greater Boston market including Boston, Cambridge, Somerville, Medford and surrounding communities

Easily accessible via public transportation

Meadow Glen
3850 Mystic Valley Parkway
Medford, MA 02155



CONTACT: Don Mace, Vice President of Retail Brokerage
DMace@KeyPointPartners.com
781.418.6243

No warranty or representation, expressed or implied, is made as to the accuracy of the information contained herein, and same is submitted subject to errors, omissions, change in price, rental or other conditions, or withdrawal without notice.