

Red Rock Plaza

1385 Washington St. (Route 1) No. Attleboro, MA 02760

FOR LEASE



20,008 SF 1st Floor
(Subdividable)

Highly visible retail box located on
heavily traveled Rt. 1 ADT 22,000
Rt. 295 ADT 53,000

National co-tenants include
Michael's, Savers, PetSmart

Center shares signalized
access with Walmart Supercenter,
Lowe's, Target, Best Buy, Dick's

Facade and pylon top panel
available

New facade under construction

Zoning: C60 (Commercial District)

No warranty or representation, expressed or implied, is made as to the accuracy of the information contained herein, and same is submitted subject to errors, omissions, change in price, rental or other conditions, or withdrawal without notice.

CONTACT: Don Mace
Vice President of Retail Brokerage
DMace@KeyPointPartners.com
781.418.6243

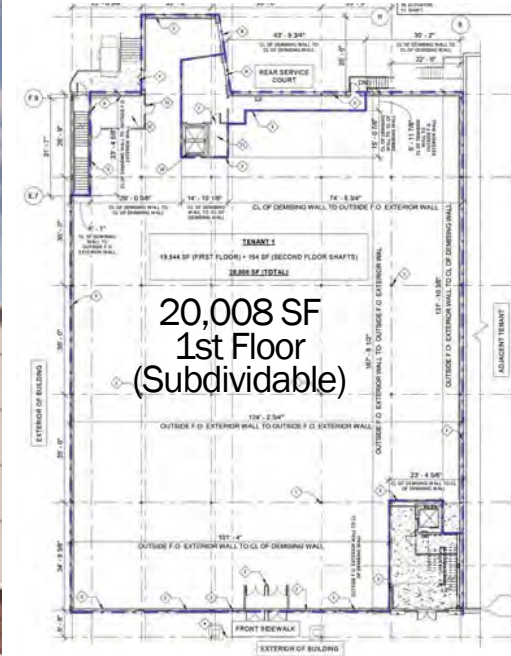
Rob Grady
Vice President of Retail Brokerage
RGrady@KeyPointPartners.com
781.418.6267

KEYPOINT
PARTNERS
 KeyPointPartners.com

Red Rock Plaza

1385 Washington St. (Route 1) No. Attleboro, MA 02760

FOR LEASE



Floor plans available on request

OVERVIEW

First floor anchor space in prominent shopping center centrally positioned along the busy Route 1 retail corridor in North Attleboro, a regional trade area with 4.6 million square feet of retail space. Key nearby tenants include Marshalls, Ulta Beauty, Dick's Sporting Goods, DSW, BJ's Wholesale Club, Market Basket, Home Depot, Raymour & Flanagan, Burlington, and many more.

2024 DEMOGRAPHICS	3 Mile	5 Mile	7 Mile	ADDITIONAL INFO.	
POPULATION	48,998	185,153	294,080	TOTAL GLA	121,077 SF
NUMBER OF HH	19,510	74,476	119,277	PARKING	539 SPACES
AVERAGE HH INCOME	\$131,079	\$107,106	\$114,717	TRAFFIC COUNT	22,000 ADT (Rt 1) 53,000 ADT (Rt. 295)

No warranty or representation, expressed or implied, is made as to the accuracy of the information contained herein, and same is submitted subject to errors, omissions, change in price, rental or other conditions, or withdrawal without notice.

CONTACT: Don Mace
Vice President of Retail Brokerage
DMace@KeyPointPartners.com
781.418.6243

Rob Grady
Vice President of Retail Brokerage
RGrady@KeyPointPartners.com
781.418.6267

Red Rock Plaza

FOR LEASE

1385 Washington St. (Rt. 1) No. Attleboro, MA 02760



CONTACT: Don Mace
Vice President of Retail Brokerage
DMace@KeyPointPartners.com
781.418.6243

Rob Grady
Vice President of Retail Brokerage
RGrady@KeyPointPartners.com
781.418.6267

KEYPOINT
PARTNERS
f in X KeyPointPartners.com

Red Rock Plaza

1385 Washington St. (Rt. 1) No. Attleboro, MA 02760

FOR LEASE



CONTACT: Don Mace
Vice President of Retail Brokerage
DMace@KeyPointPartners.com
781.418.6243

Rob Grady
Vice President of Retail Brokerage
RGrady@KeyPointPartners.com
781.418.6267

KEYPOINT
PARTNERS
KeyPointPartners.com

Red Rock Plaza

1385 Washington St. (Route 1) No. Attleboro, MA 02760

SHOWROOM FOR LEASE



22,826 SF 2nd Floor

Highly visible retail space located on heavily traveled Rt. 1 ADT 22,000
Rt. 295 ADT 53,000

National co-tenants include
Michael's, Savers, PetSmart

Center shares signalized
access with Walmart Supercenter,
Lowe's, Target, Best Buy, Dick's

Facade and pylon panel available

New facade under construction

Zoning: C60 (Commercial District)

UNDER CONSTRUCTION

No warranty or representation, expressed or implied, is made as to the accuracy of the information contained herein, and same is submitted subject to errors, omissions, change in price, rental or other conditions, or withdrawal without notice.

CONTACT: Don Mace
Vice President of Retail Brokerage
DMace@KeyPointPartners.com
781.418.6243

Rob Grady
Vice President of Retail Brokerage
RGrady@KeyPointPartners.com
781.418.6267

KEYPOINT
PARTNERS
 KeyPointPartners.com

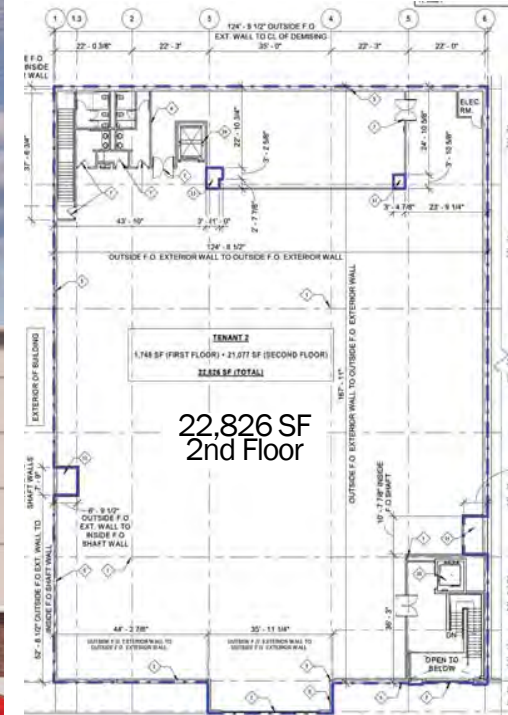
Red Rock Plaza

1385 Washington St. (Route 1) No. Attleboro, MA 02760

SHOWROOM FOR LEASE



Dedicated 2nd floor entrance



Floor plans available on request

OVERVIEW

Second floor showroom in prominent shopping center centrally positioned along the busy Route 1 retail corridor in North Attleboro, a regional trade area with 4.6 million square feet of retail space. Key nearby tenants include Marshalls, Ulta Beauty, Dick's Sporting Goods, DSW, BJ's Wholesale Club, Market Basket, Home Depot, Raymour & Flanagan, Burlington, and many more.

2024 DEMOGRAPHICS	3 Mile	5 Mile	7 Mile	ADDITIONAL INFO.	
POPULATION	48,998	185,153	294,080	TOTAL GLA	121,077 SF
NUMBER OF HH	19,510	74,476	119,277	PARKING	539 SPACES
AVERAGE HH INCOME	\$131,079	\$107,106	\$114,717	TRAFFIC COUNT	22,000 ADT (Rt 1) 53,000 ADT (Rt. 295)

No warranty or representation, expressed or implied, is made as to the accuracy of the information contained herein, and same is submitted subject to errors, omissions, change in price, rental or other conditions, or withdrawal without notice.

CONTACT: Don Mace
Vice President of Retail Brokerage
DMace@KeyPointPartners.com
781.418.6243

Rob Grady
Vice President of Retail Brokerage
RGrady@KeyPointPartners.com
781.418.6267

Red Rock Plaza

1385 Washington St. (Rt. 1) No. Attleboro, MA 02760

SHOWROOM FOR LEASE



CONTACT: Don Mace
Vice President of Retail Brokerage
DMace@KeyPointPartners.com
781.418.6243

Rob Grady
Vice President of Retail Brokerage
RGrady@KeyPointPartners.com
781.418.6267

KEYPOINT
PARTNERS
f in X KeyPointPartners.com

SHOWROOM FOR LEASE

Emerald Square Mall
JCPenney macys

Red Rock Plaza
22,826 SF 2nd Floor
Michaels
PETS MART
SAVERS

Target

LAUNCH

BEST BUY

planet fitness
PLAY IT AGAIN SPORTS

Guitar Center
FedEx Office

Walmart SUPERCENTER

Blinds To Go
T-Mobile

JOANN
DICK'S SPORTING GOODS
DSW

LOWE'S
RAYMOUR & FLANNAGAN

99c Only

Chris Gasbarro's Fine Wine & Spirits
verizon wireless

RAYMOUR & FLANNAGAN
DOLLAR TREE
PATEL BROTHERS

OLD NAVY
Marshalls
five BELOW
SKECHERS
Panera
LENSCRAFTERS
OSH KOSH Gypsy
ULTA BEAUTY
carter's
GameStop
ME Massage Envy

Interstate 295
Exit 1
53,000 ADT
22,000 ADT
1/2 Mile
North Attleboro
Attleboro

No warranty or representation, expressed or implied, is made as to the accuracy of the information contained herein, and same is submitted subject to errors, omissions, change in price, rental or other conditions, or withdrawal without notice.

KEYPOINT PARTNERS
   KeyPointPartners.com

Red Rock Plaza

1385 Washington St. (Rt. 1) No. Attleboro, MA 02760

FOR LEASE

6,175 SF Pad



AVAILABLE 6,175 SF Pad

PROPERTY HIGHLIGHTS

Prominent shopping center anchored by Michaels, PetSmart, and Savers, well-positioned on the "50-yard line" of the busy Route 1 retail corridor, which encompasses 4.6 million square feet of retail space

The center is flanked by Best Buy and Target, and shares access to Walmart Supercenter, Lowe's Home Improvement, and Dick's Sporting Goods - other nearby tenants include Marshalls, Ulta Beauty, DSW, BJ's, Market Basket, Home Depot, and many more

The highly visible outparcel is situated at a signalized entrance and faces Route 1

Fully built-out restaurant - space plans available upon request

No warranty or representation, expressed or implied, is made as to the accuracy of the information contained herein, and same is submitted subject to errors, omissions, change in price, rental or other conditions, or withdrawal without notice.

CONTACT: Don Mace
Vice President of Retail Brokerage
DMace@KeyPointPartners.com
781.418.6243

Rob Grady
Vice President of Retail Brokerage
RGrady@KeyPointPartners.com
781.418.6267

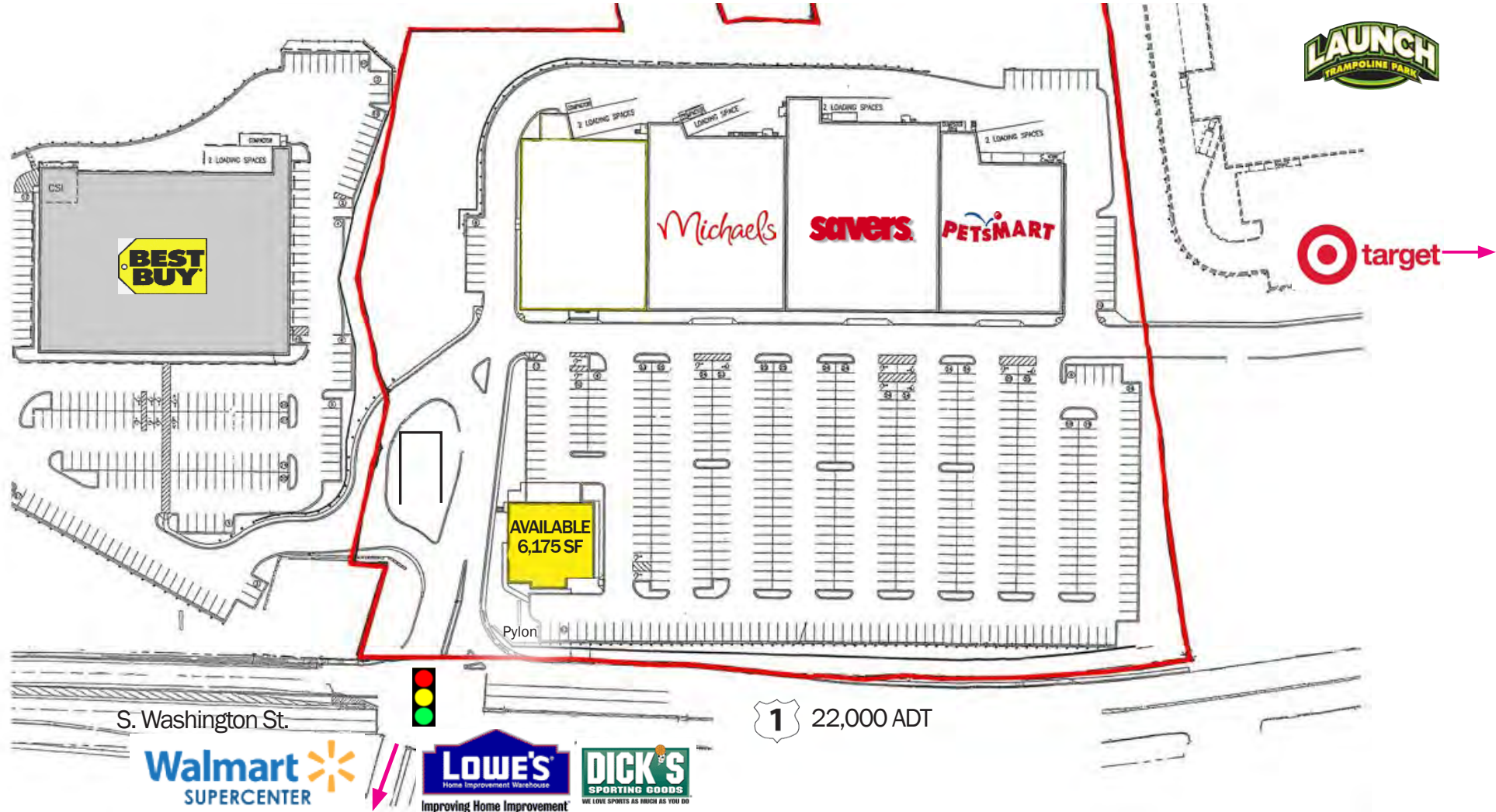
KEYPOINT
PARTNERS
KeyPointPartners.com

Red Rock Plaza

1385 Washington St. (Rt. 1) No. Attleboro, MA 02760

FOR LEASE

6,175 SF Pad



2024 DEMOGRAPHICS	3 Mile	5 Mile	7 Mile	ADDITIONAL INFO.	
POPULATION	48,998	185,153	294,080	TOTAL GLA	121,045 SF
NUMBER OF HH	19,510	74,476	119,277	PARKING	539 SPACES
AVERAGE HH INCOME	\$131,079	\$107,106	\$114,717	TRAFFIC COUNT	25,681 ADT (Rte 1)

No warranty or representation, expressed or implied, is made as to the accuracy of the information contained herein, and same is submitted subject to errors, omissions, change in price, rental or other conditions, or withdrawal without notice.

CONTACT: Don Mace
Vice President of Retail Brokerage
DMace@KeyPointPartners.com
781.418.6243

Rob Grady
Vice President of Retail Brokerage
RGrady@KeyPointPartners.com
781.418.6267

KEYPOINT
PARTNERS
f in X KeyPointPartners.com