

Red Rock Plaza

1385 Washington St. (Route 1) No. Attleboro, MA 02760

FOR LEASE



**19,844 SF 1st Floor
(Subdividable)**

Highly visible retail box located on heavily traveled Rt. 1 ADT 22,000
Rt. 295 ADT 53,000

National co-tenants include Michael's, Savers, PetSmart

Center shares signalized access with Walmart Supercenter, Lowe's, Target, Best Buy, Dick's

Facade and pylon top panel available

New facade under construction

Zoning: C60 (Commercial District)

No warranty or representation, expressed or implied, is made as to the accuracy of the information contained herein, and same is submitted subject to errors, omissions, change in price, rental or other conditions, or withdrawal without notice.

CONTACT: Don Mace
Vice President of Retail Brokerage
DMace@KeyPointPartners.com
781.418.6243

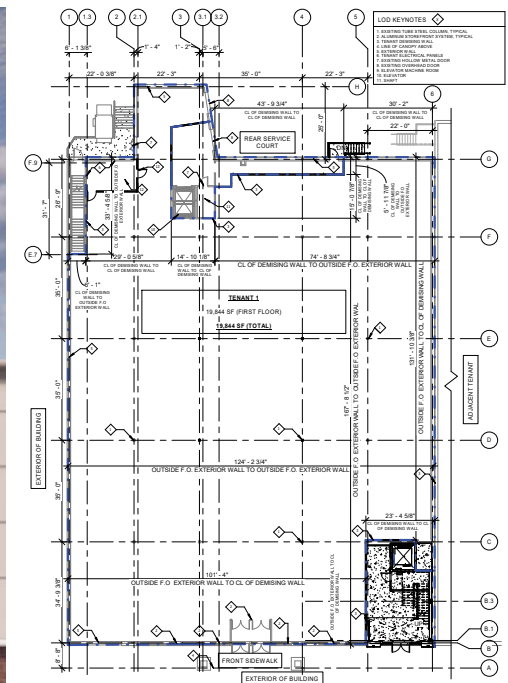
Rob Grady
Vice President of Retail Brokerage
RGrady@KeyPointPartners.com
781.418.6267

KEYPOINT
PARTNERS
 KeyPointPartners.com

Red Rock Plaza

1385 Washington St. (Route 1) No. Attleboro, MA 02760

FOR LEASE



19,844 SF 1st Floor
(Subdividable)

Floor plans available on request

OVERVIEW

First floor anchor space in prominent shopping center centrally positioned along the busy Route 1 retail corridor in North Attleboro, a regional trade area with 4.6 million square feet of retail space. Key nearby tenants include Marshalls, Ulta Beauty, Dick's Sporting Goods, DSW, BJ's Wholesale Club, Market Basket, Home Depot, Raymour & Flanagan, Burlington, and many more.

2025 DEMOGRAPHICS	3 Mile	5 Mile	7 Mile	ADDITIONAL INFO.	
POPULATION	48,998	185,153	294,080	TOTAL GLA	121,077 SF
NUMBER OF HH	19,510	74,476	119,277	PARKING	539 SPACES
AVERAGE HH INCOME	\$131,079	\$107,106	\$114,717	TRAFFIC COUNT	22,000 ADT (Rt 1) 53,000 ADT (Rt. 295)

No warranty or representation, expressed or implied, is made as to the accuracy of the information contained herein, and same is submitted subject to errors, omissions, change in price, rental or other conditions, or withdrawal without notice.

CONTACT: Don Mace
Vice President of Retail Brokerage
DMace@KeyPointPartners.com
781.418.6243

Rob Grady
Vice President of Retail Brokerage
RGrady@KeyPointPartners.com
781.418.6267

Red Rock Plaza

FOR LEASE

1385 Washington St. (Rt. 1) No. Attleboro, MA 02760



CONTACT: Don Mace
Vice President of Retail Brokerage
DMace@KeyPointPartners.com
781.418.6243

Rob Grady
Vice President of Retail Brokerage
RGrady@KeyPointPartners.com
781.418.6267

KEYPOINT
PARTNERS
f in X KeyPointPartners.com

FOR LEASE

Emerald Square Mall

JCPenney macys

Red Rock Plaza
19,844 SF 1st Floor
(Subdividable)

Michaels
Where Creativity Happens

PETSMART SAVERS

BEST BUY

planet fitness

Guitar Center.com

Queen Street JOB LOT

FedExOffice

Walmart SUPERCENTER

Ninety Nine

Blinds To Go

T-Mobile

Villaville Snuggles

Lowe's
Improving Home Improvement

DICK'S Sporting Goods

DSW

RAYMOUR & FLANAGAN Furniture

OshKosh B'gosh

ULTA BEAUTY

carter's

GameStop

ME Massage Envy

LENSCRAFTERS

SKECHERS

five BELOW

Marshalls

OLD NAVY

LONGHORN STEAKHOUSE

Panera BREAD

EUROPEAN BAKERIES

Chris Gasbarro's Fine Wine & Spirits

verizon wireless

DOLLAR TREE

PATEL BROTHERS
"Celebrating Our Food...Our Culture"

RESTAURANT BREWHOUSE

INTERSTATE 295

Exit 1

53,000 ADT

North Attleboro

Attleboro

22,000 ADT

1/2 Mile

No warranty or representation, expressed or implied, is made as to the accuracy of the information contained herein, and same is submitted subject to errors, omissions, change in price, rental or other conditions, or withdrawal without notice.

KEYPOINT[®]
PARTNERS
f in X KeyPointPartners.com

Red Rock Plaza

1385 Washington St. (Route 1) No. Attleboro, MA 02760

SHOWROOM FOR LEASE



22,826 SF 2nd Floor

Highly visible retail space located on heavily traveled Rt. 1 ADT 22,000
Rt. 295 ADT 53,000

National co-tenants include
Michael's, Savers, PetSmart

Center shares signalized
access with Walmart Supercenter,
Lowe's, Target, Best Buy, Dick's

Facade and pylon panel available

New facade under construction

Zoning: C60 (Commercial District)

UNDER CONSTRUCTION

No warranty or representation, expressed or implied, is made as to the accuracy of the information contained herein, and same is submitted subject to errors, omissions, change in price, rental or other conditions, or withdrawal without notice.

CONTACT: Don Mace
Vice President of Retail Brokerage
DMace@KeyPointPartners.com
781.418.6243

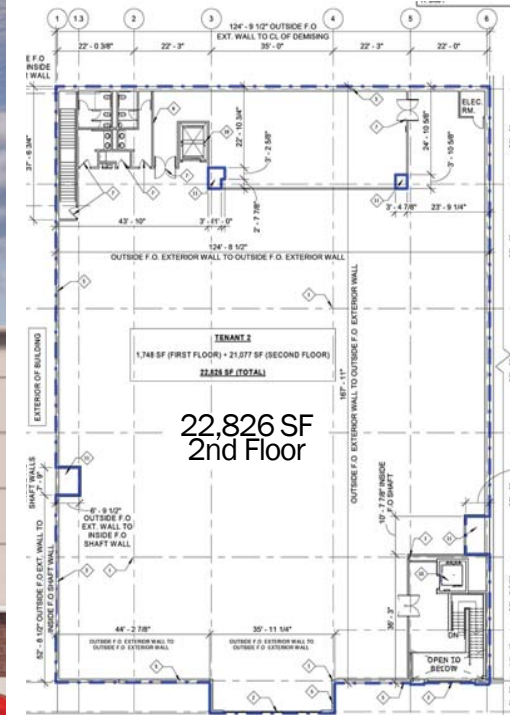
Rob Grady
Vice President of Retail Brokerage
RGrady@KeyPointPartners.com
781.418.6267

KEYPOINT
PARTNERS
 KeyPointPartners.com

Red Rock Plaza

1385 Washington St. (Route 1) No. Attleboro, MA 02760

SHOWROOM FOR LEASE



Floor plans available on request

OVERVIEW

Second floor showroom in prominent shopping center centrally positioned along the busy Route 1 retail corridor in North Attleboro, a regional trade area with 4.6 million square feet of retail space. Key nearby tenants include Marshalls, Ulta Beauty, Dick's Sporting Goods, DSW, BJ's Wholesale Club, Market Basket, Home Depot, Raymour & Flanagan, Burlington, and many more.

2025 DEMOGRAPHICS	3 Mile	5 Mile	7 Mile	ADDITIONAL INFO.	
POPULATION	48,998	185,153	294,080	TOTAL GLA	121,077 SF
NUMBER OF HH	19,510	74,476	119,277	PARKING	539 SPACES
AVERAGE HH INCOME	\$131,079	\$107,106	\$114,717	TRAFFIC COUNT	22,000 ADT (Rt 1) 53,000 ADT (Rt. 295)

No warranty or representation, expressed or implied, is made as to the accuracy of the information contained herein, and same is submitted subject to errors, omissions, change in price, rental or other conditions, or withdrawal without notice.

CONTACT: Don Mace
Vice President of Retail Brokerage
DMace@KeyPointPartners.com
781.418.6243

Rob Grady
Vice President of Retail Brokerage
RGrady@KeyPointPartners.com
781.418.6267

Red Rock Plaza

1385 Washington St. (Rt. 1) No. Attleboro, MA 02760

SHOWROOM FOR LEASE



CONTACT: Don Mace
Vice President of Retail Brokerage
DMace@KeyPointPartners.com
781.418.6243

Rob Grady
Vice President of Retail Brokerage
RGrady@KeyPointPartners.com
781.418.6267

KEYPOINT
PARTNERS
f in X KeyPointPartners.com

Red Rock Plaza

1385 Washington St. (Rt. 1) No. Attleboro, MA 02760

SHOWROOM FOR LEASE



No warranty or representation, expressed or implied, is made as to the accuracy of the information contained herein, and same is submitted subject to errors, omissions, change in price, rental or other conditions, or withdrawal without notice.

CONTACT: Don Mace
Vice President of Retail Brokerage
DMace@KeyPointPartners.com
781.418.6243

Rob Grady
Vice President of Retail Brokerage
RGrady@KeyPointPartners.com
781.418.6267

KEYPOINT
PARTNERS
KeyPointPartners.com