

Red Rock Plaza

1385 Washington St. (Route 1) No. Attleboro, MA 02760

FOR LEASE



19,844 SF 1st Floor (Subdividable)

Highly visible retail box located on heavily traveled Rt. 1 ADT 22,000
Rt. 295 ADT 53,000

National co-tenants include Michael's, Savers, PetSmart

Center shares signalized access with Walmart Supercenter, Lowe's, Target, Best Buy, Dick's

Facade and pylon top panel available

New facade under construction

Zoning: C60 (Commercial District)

UNDER CONSTRUCTION

No warranty or representation, expressed or implied, is made as to the accuracy of the information contained herein, and same is submitted subject to errors, omissions, change in price, rental or other conditions, or withdrawal without notice.

CONTACT: Don Mace
Vice President of Retail Brokerage
DMace@KeyPointPartners.com
781.418.6243

Rob Grady
Vice President of Retail Brokerage
RGrady@KeyPointPartners.com
781.418.6267

KEYPOINT
PARTNERS
 KeyPointPartners.com

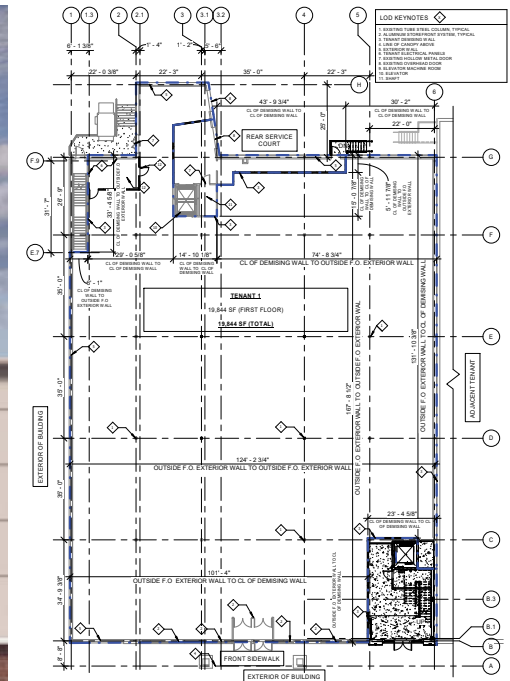
Red Rock Plaza

FOR LEASE

1385 Washington St. (Route 1) No. Attleboro, MA 02760



Dedicated 2nd floor entrance



19,844 SF 1st Floor
(Subdividable)

Floor plans available on request

OVERVIEW

First floor anchor space in prominent shopping center centrally positioned along the busy Route 1 retail corridor in North Attleboro, a regional trade area with 4.6 million square feet of retail space. Key nearby tenants include Marshalls, Ulta Beauty, Dick's Sporting Goods, DSW, BJ's Wholesale Club, Market Basket, Home Depot, Raymour & Flanagan, Burlington, and many more.

2025 DEMOGRAPHICS	3 Mile	5 Mile	7 Mile	ADDITIONAL INFO.	
POPULATION	48,998	185,153	294,080	TOTAL GLA	121,077 SF
NUMBER OF HH	19,510	74,476	119,277	PARKING	539 SPACES
AVERAGE HH INCOME	\$131,079	\$107,106	\$114,717	TRAFFIC COUNT	22,000 ADT (Rt 1) 53,000 ADT (Rt. 295)

No warranty or representation, expressed or implied, is made as to the accuracy of the information contained herein, and same is submitted subject to errors, omissions, change in price, rental or other conditions, or withdrawal without notice.

CONTACT: Don Mace
Vice President of Retail Brokerage
DMace@KeyPointPartners.com
781.418.6243

Rob Grady
Vice President of Retail Brokerage
RGrady@KeyPointPartners.com
781.418.6267



Red Rock Plaza

FOR LEASE

1385 Washington St. (Rt. 1) No. Attleboro, MA 02760



CONTACT: Don Mace
Vice President of Retail Brokerage
DMace@KeyPointPartners.com
781.418.6243

Rob Grady
Vice President of Retail Brokerage
RGrady@KeyPointPartners.com
781.418.6267

KEYPOINT
PARTNERS
KeyPointPartners.com

Red Rock Plaza

FOR LEASE

1385 Washington St. (Rt. 1) No. Attleboro, MA 02760

Emerald Square Mall
JCPenney macys

Red Rock Plaza
19,844 SF 1st Floor (Subdividable)
Michaels
PETS M A R T S O V E R S

target

LAUNCH

BEST BUY

planet fitness
PLAY IT AGAIN SPORTS

Guitar Center.com
FedEx Office

Queen State JOB LOT

Walmart SUPERCENTER

Ninety Nine

BLINDS To Go
T-Mobile

Vitamin Shoppe

LOWE'S
Improving Home Improvement

DICK'S
D S W

RAYMOUR & FLANIGAN

RAYMOUR & FLANIGAN
FURNITURE

DOLLAR TREE
PATEL BROTHERS
"Celebrating Our Food...Our Culture"

Chris Gasbarro's Fine Wine & Spirits
verizon wireless

OLD NAVY
Marshall's
five BELOW
SKECHERS

Panera BREAD
LENSCRAFTERS

OSH KOSH B'GOSH
ULTA BEAUTY

carter's
GameStop

ME Massage Envy

INTERSTATE 295 53,000 ADT
Exit 1

1 22,000 ADT

North Attleboro

Attleboro

1/2 Mile

No warranty or representation, expressed or implied, is made as to the accuracy of the information contained herein, and same is submitted subject to errors, omissions, change in price, rental or other conditions, or withdrawal without notice.

CONTACT: Don Mace
Vice President of Retail Brokerage
DMace@KeyPointPartners.com
781.418.6243

Rob Grady
Vice President of Retail Brokerage
RGrady@KeyPointPartners.com
781.418.6267



22,825 SF 2nd Floor

Highly visible retail space located on heavily traveled Rt. 1 ADT 22,000
Rt. 295 ADT 53,000

National co-tenants include Michael's, Savers, PetSmart

Center shares signalized access with Walmart Supercenter, Lowe's, Target, Best Buy, Dick's

Facade and pylon panel available

New facade under construction

Zoning: C60 (Commercial District)

UNDER CONSTRUCTION

No warranty or representation, expressed or implied, is made as to the accuracy of the information contained herein, and same is submitted subject to errors, omissions, change in price, rental or other conditions, or withdrawal without notice.

CONTACT: Don Mace
Vice President of Retail Brokerage
DMace@KeyPointPartners.com
781.418.6243

Rob Grady
Vice President of Retail Brokerage
RGrady@KeyPointPartners.com
781.418.6267

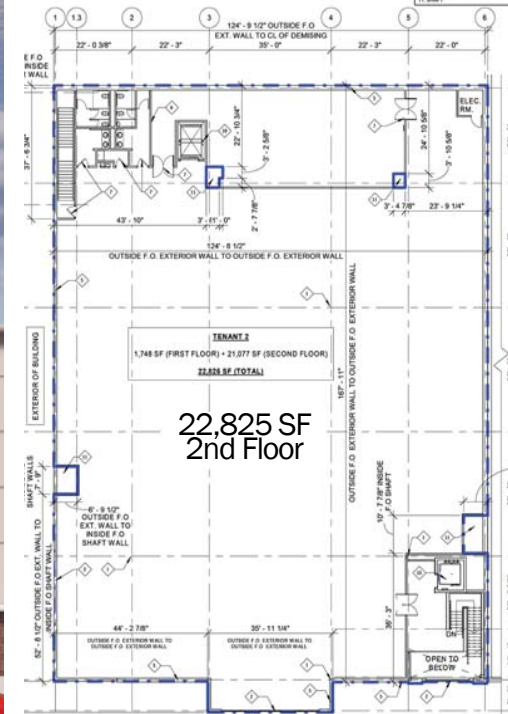
Red Rock Plaza

1385 Washington St. (Route 1) No. Attleboro, MA 02760

SHOWROOM FOR LEASE



Dedicated 2nd floor entrance



Floor plans available on request

OVERVIEW

Second floor showroom in prominent shopping center centrally positioned along the busy Route 1 retail corridor in North Attleboro, a regional trade area with 4.6 million square feet of retail space. Key nearby tenants include Marshalls, Ulta Beauty, Dick's Sporting Goods, DSW, BJ's Wholesale Club, Market Basket, Home Depot, Raymour & Flanagan, Burlington, and many more.

2025 DEMOGRAPHICS	3 Mile	5 Mile	7 Mile	ADDITIONAL INFO.	
POPULATION	48,998	185,153	294,080	TOTAL GLA	121,077 SF
NUMBER OF HH	19,510	74,476	119,277	PARKING	539 SPACES
AVERAGE HH INCOME	\$131,079	\$107,106	\$114,717	TRAFFIC COUNT	22,000 ADT (Rt 1) 53,000 ADT (Rt. 295)

No warranty or representation, expressed or implied, is made as to the accuracy of the information contained herein, and same is submitted subject to errors, omissions, change in price, rental or other conditions, or withdrawal without notice.

CONTACT: Don Mace
Vice President of Retail Brokerage
DMace@KeyPointPartners.com
781.418.6243

Rob Grady
Vice President of Retail Brokerage
RGrady@KeyPointPartners.com
781.418.6267



Red Rock Plaza

1385 Washington St. (Rt. 1) No. Attleboro, MA 02760

SHOWROOM FOR LEASE



CONTACT: Don Mace
Vice President of Retail Brokerage
DMace@KeyPointPartners.com
781.418.6243

Rob Grady
Vice President of Retail Brokerage
RGrady@KeyPointPartners.com
781.418.6267

Red Rock Plaza

1385 Washington St. (Rt. 1) No. Attleboro, MA 02760

SHOWROOM FOR LEASE

Red Rock Plaza
22,825 SF 2nd Floor

Emerald Square Mall
JCPenney macys

Target

Michael's
Where Creativity Happens

PETSMART **SAVERS**

LAUNCH

BEST BUY

planet fitness **Guitar Center** **Job Lot**

PLAY IT AGAIN SPORTS **FedEx Office**

Walmart SUPERCENTER

Ninety Nine

Chris Gasbarro's Fine Wine & Spirits

verizon wireless

BLINDS To Go **T-Mobile** **Vitamin Shoppe**

LOWE'S **DICK'S** **DSW**

RAYMOUR & FLAVIGAN **costco** **walgreens**

RAYMOUR & FLAVIGAN **DOLLAR TREE** **PATEL BROTHERS**

OLD NAVY **Marshalls** **five BELOW** **SKECHERS**

LONGHORN **Panera** **LENSCRAFTERS** **ULTA BEAUTY**

OSHKOSH B'gosh **GameStop** **ME Massage Envy**

BJ's RESTAURANT BREWHOUSE

Interstate 295 53,000 ADT
Exit 1

Rt. 1 22,000 ADT

North Attleboro

Attleboro

1/2 Mile

No warranty or representation, expressed or implied, is made as to the accuracy of the information contained herein, and same is submitted subject to errors, omissions, change in price, rental or other conditions, or withdrawal without notice.

CONTACT: Don Mace
Vice President of Retail Brokerage
DMace@KeyPointPartners.com
781.418.6243

Rob Grady
Vice President of Retail Brokerage
RGrady@KeyPointPartners.com
781.418.6267