

# Red Rock Plaza

1385 Washington St. (Route 1) No. Attleboro, MA 02760

# FOR LEASE



## 19,844 SF 1st Floor (Subdividable)

Highly visible retail box located on heavily traveled Rt. 1 ADT 22,000  
Rt. 295 ADT 53,000

National co-tenants include Michael's, Savers, PetSmart

Center shares signalized access with Walmart Supercenter, Lowe's, Target, Best Buy, Dick's

Facade and pylon top panel available

New facade under construction

Zoning: C60 (Commercial District)

No warranty or representation, expressed or implied, is made as to the accuracy of the information contained herein, and same is submitted subject to errors, omissions, change in price, rental or other conditions, or withdrawal without notice.

## UNDER CONSTRUCTION

**CONTACT:** Don Mace  
Vice President of Retail Brokerage  
DMace@KeyPointPartners.com  
781.418.6243

Rob Grady  
Vice President of Retail Brokerage  
RGrady@KeyPointPartners.com  
781.418.6267

**KEYPOINT**  
PARTNERS  
f in KeyPointPartners.com

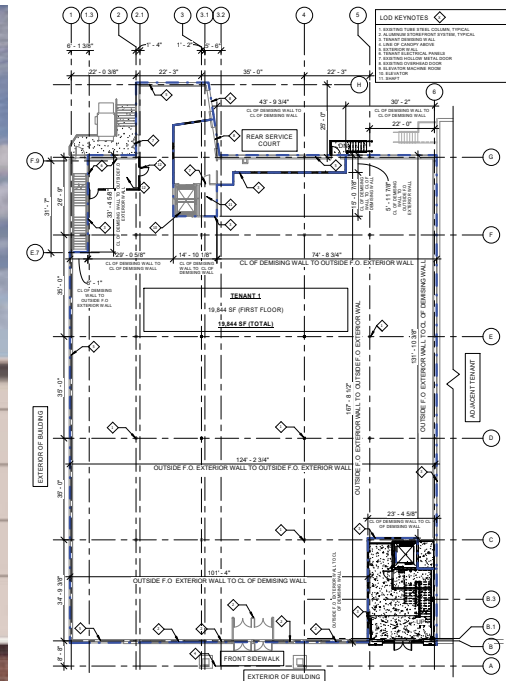
# Red Rock Plaza

# FOR LEASE

1385 Washington St. (Route 1) No. Attleboro, MA 02760



Dedicated 2nd floor entrance



19,844 SF 1st Floor  
(Subdividable)

Floor plans available on request

## OVERVIEW

First floor anchor space in prominent shopping center centrally positioned along the busy Route 1 retail corridor in North Attleboro, a regional trade area with 4.6 million square feet of retail space. Key nearby tenants include Marshalls, Ulta Beauty, Dick's Sporting Goods, DSW, BJ's Wholesale Club, Market Basket, Home Depot, Raymour & Flanagan, Burlington, and many more.

2026 DEMOGRAPHICS	3 Mile	5 Mile	7 Mile	ADDITIONAL INFO.	
POPULATION	48,202	190,091	299,267	TOTAL GLA	121,077 SF
NUMBER OF HH	19,097	76,473	121,091	PARKING	539 SPACES
AVERAGE HH INCOME	\$137,500	\$112,857	\$121,462	TRAFFIC COUNT	22,000 ADT (Rt 1) 53,000 ADT (Rt. 295)

No warranty or representation, expressed or implied, is made as to the accuracy of the information contained herein, and same is submitted subject to errors, omissions, change in price, rental or other conditions, or withdrawal without notice.

**CONTACT:** Don Mace  
Vice President of Retail Brokerage  
DMace@KeyPointPartners.com  
781.418.6243

Rob Grady  
Vice President of Retail Brokerage  
RGrady@KeyPointPartners.com  
781.418.6267



# Red Rock Plaza

# FOR LEASE

1385 Washington St. (Rt. 1) No. Attleboro, MA 02760



**CONTACT:** Don Mace  
Vice President of Retail Brokerage  
DMace@KeyPointPartners.com  
781.418.6243

Rob Grady  
Vice President of Retail Brokerage  
RGrady@KeyPointPartners.com  
781.418.6267

**KEYPOINT**  
PARTNERS  
KeyPointPartners.com

# Red Rock Plaza

# FOR LEASE

1385 Washington St. (Rt. 1) No. Attleboro, MA 02760

**Red Rock Plaza**  
 19,844 SF 1st Floor  
 (Subdividable)

Michael's  
 Where Creativity Happens

PETSMART SAVERS

Target

BEST BUY

Walmart SUPERCENTER

99c Only Nine

53,000 ADT  
 Exit 1

22,000 ADT

1/2 Mile

North Attleboro

Attleboro

Emerald Square Mall  
 JCPenney macys

RAYMOUR & FLANGAN Furniture  
 DOLLAR TREE  
 PATEL BROTHERS "Celebrating Our Food...Our Culture"

BJ's RESTAURANT BREWHOUSE

Chris Gasbarro's Fine Wine & Spirits  
 verizon wireless

OLD NAVY  
 Marshalls  
 five BELOW  
 SKECHERS

LONGHORN RESTAURANT

Panera BREAD

LENSCRAFTERS

OSH KOSH B'gosh

ULTA BEAUTY

carter's  
 GameStop

ME Massage Envy

planet fitness  
 PLAY IT AGAIN SPORTS

Guitar Center.com  
 FedEx Office

Queen State JOB LOT

Blinds To Go  
 T-Mobile

Vitamin Shoppe

LOWE'S  
 Improving Home Improvement

DICK'S Sporting Goods  
 DSW

RAYMOUR & FLANGAN Furniture

No warranty or representation, expressed or implied, is made as to the accuracy of the information contained herein, and same is submitted subject to errors, omissions, change in price, rental or other conditions, or withdrawal without notice.

**CONTACT:** Don Mace  
 Vice President of Retail Brokerage  
 DMace@KeyPointPartners.com  
 781.418.6243

Rob Grady  
 Vice President of Retail Brokerage  
 RGrady@KeyPointPartners.com  
 781.418.6267