



apple
cinemas

STATE-OF-THE-ART FAMILY ENTERTAINMENT

apple cinemas



Apple Cinema Pittsford, New York - Now Open!



SEEKING SITES FOR NATIONAL EXPANSION

Don Mace, VP of Retail Brokerage
978.828.7383
dmace@keypointpartners.com

TENANT
REPRESENTATION
NATIONAL REGIONAL LOCAL

KEYPOINT
PARTNERS
KeyPointPartners.com



Rendering of Danville, CA location, opening soon

FEATURES

All Apple Cinemas feature the following:

- State-of-the-art digital sound and projection
- Luxury electronic recliner stadium seating
- Spacious aisles
- Modern lobbies with high-quality concessions
- Dining options at selected locations featuring BurgerFi
- Upscale bar at selected locations
- Premium large format (Apple Cinematic Xperience - ACX with Dolby Atmos)
- Reserved seating including online booking and kiosk capabilities
- Expanded menu items including hot snacks, pizza, burgers, and more
- Exclusive Bargain Tuesdays, Senior Mondays, Student Wednesdays



PHYSICAL REQUIREMENTS

- Target 30,000 - 60,000 square feet
- Flexible footprint - will consider 15,000 SF - 80,000 SF
- Minimum clear height 22 feet; Imax 27'
- Dedicated pylon signage
- Parking subject to code
- Existing cinema conversions - minimum 8 screens
- All sites considered throughout the USA

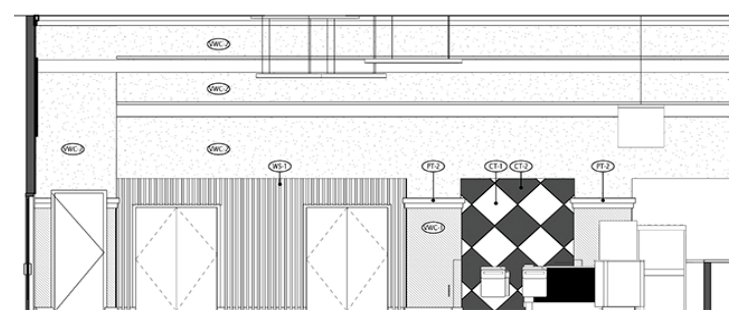
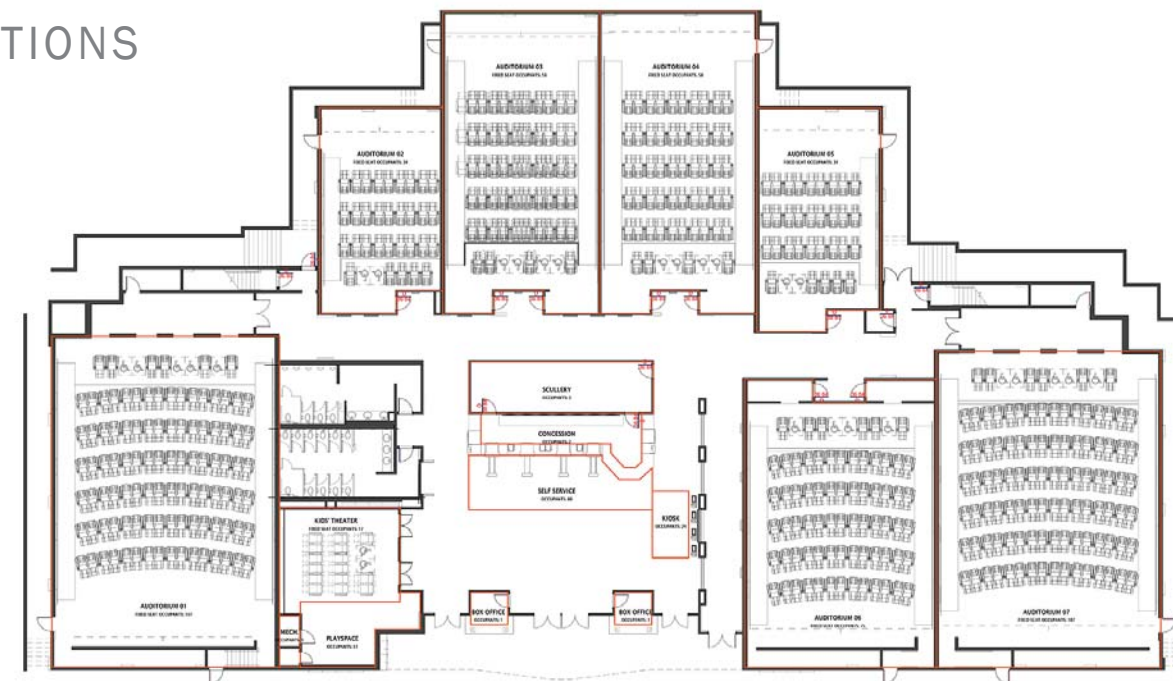
SITE PREFERENCES

- Regional/national markets
- High-traffic shopping centers with highway access
- Liquor license, ability to provide dining
- Preferred co-tenancy: other entertainment, national retailers, dominant grocers
- Will consider managing/operating theaters for landlords/investors

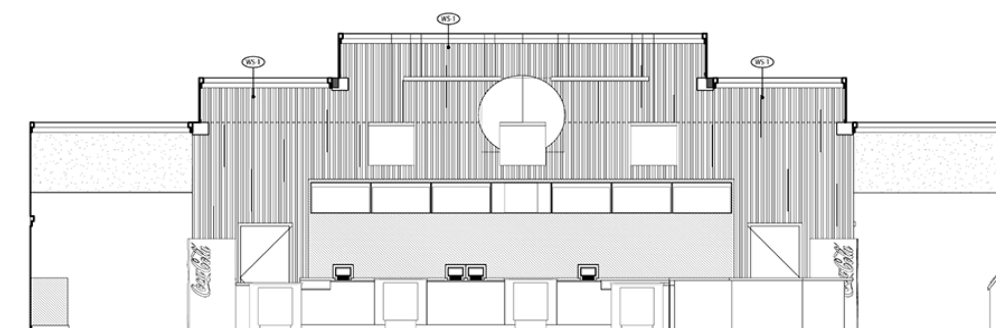
PREFERRED DEMOGRAPHICS

- Flexible: each market opportunity and potential theater location is reviewed at length in conjunction with sales forecast

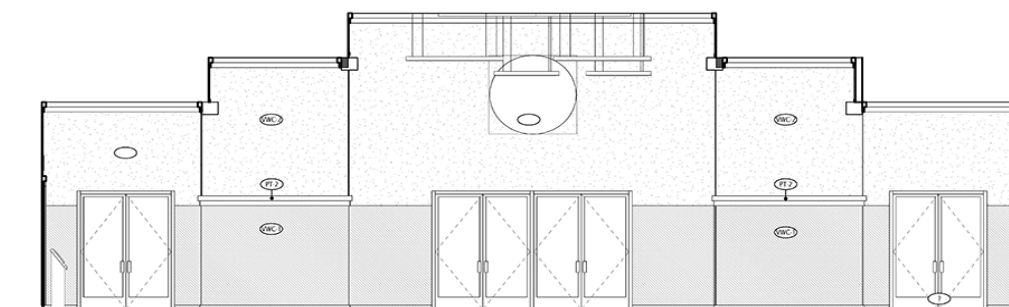
REPRESENTATIVE PLAN & ELEVATIONS



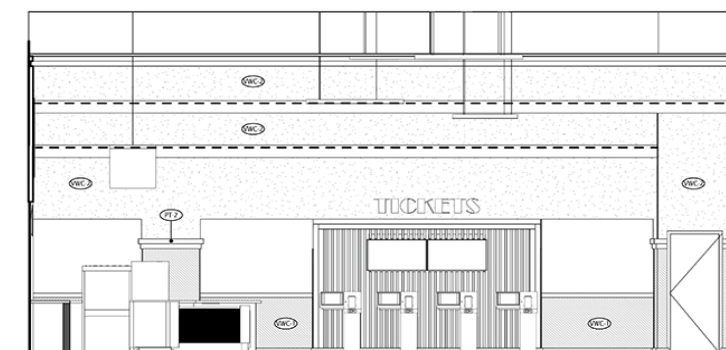
4 LOBBY ELEVATION - WEST
1/4" = 1'-0"



1 LOBBY ELEVATION - NORTH
1/4" = 1'-0"



2 LOBBY ELEVATION - SOUTH
1/4" = 1'-0"



3 LOBBY ELEVATION - EAST
1/4" = 1'-0"

CASE STUDY: WARWICK MALL

The Showcase Cinema at the Warwick Mall, Warwick RI closed during the pandemic - and opted not to re-open. Don Mace negotiated a lease for Apple Cinemas at the location, and in March of 2022, the new state-of-the-art cinema held a triumphant Grand Opening Celebration. Over 200 attendees, including state and town officials, mall ownership and staff, and assorted invited guests experienced an entertainment concept that the local NBC affiliate described as being “like many of us have never experienced”.



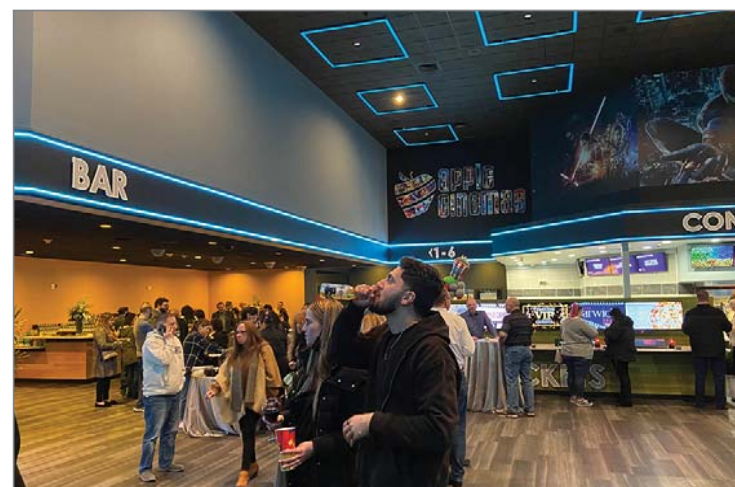
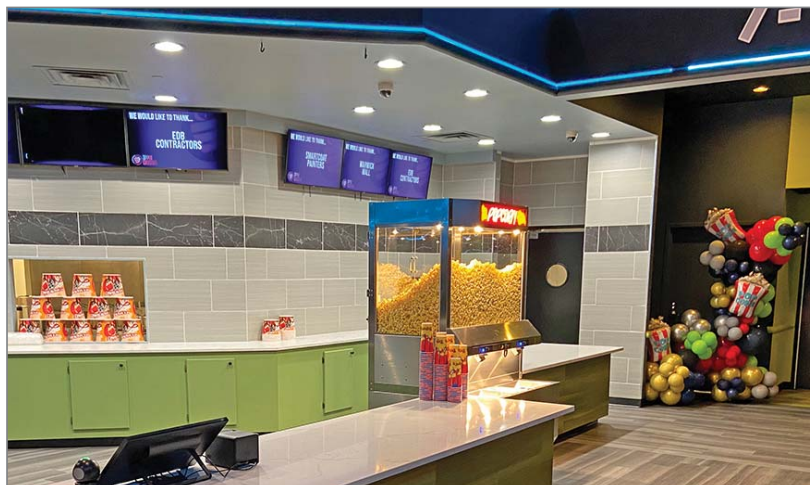
FORMER SHOWCASE CINEMA



NEW APPLE CINEMA



GRAND OPENING RECEPTION, WARWICK, RI, MARCH 2022



LOCATIONS

CAMBRIDGE, MA
 WATERBURY, CT
 SIMSBURY, CT
 TORRINGTON, CT
 HARTFORD, CT
 WARWICK, RI
 HOOKSETT, NH
 MERRIMACK, NH
 SACO, ME
 WESTBROOK, ME
 PITTSFORD, NY
 GREECE, NY
 DANVILLE, CA
 SEVERAL LEASES
 PENDING



CAMBRIDGE, MA



Alewife Brook Parkway
 10 Screens

WATERBURY, CT



920 Wolcott Street
 10 Screens

SIMSBURY, CT



530 Bushy Hill Road
 8 Screens

TORRINGTON, CT



89 Farley Place
 6 Screens

HARTFORD, CT



330 New Park Avenue
 12 Screens

WARWICK, RI



Warwick Mall
 12 Screens

HOOKSETT, NH



126 Hooksett Road
 15 Screens

MERRIMACK, NH



11 Executive Park Drive
 12 Screens

SACO, ME



779 Portland Road
 13 Screens

WESTBROOK, ME



183 County Road
 16 Screens

PITTSFORD, NY



3349 Monroe Avenue
 9 Screens - Featuring BurgerFi

GREECE, NY



The Mall at Greece Ridge
 12 Screens
 Opening Q1 2025

DANVILLE, CA



Blackhawk Plaza
 12 Screens
 Opening Q1 2025

SEVERAL LEASES PENDING



PRINCIPALS

Apple Cinemas' principals have over 45 years combined entertainment industry experience, and many years of experience in leadership and management for both public and private sector companies:

Sivakumar Shanmugasundaram, Co-founder

Jegan Gomangalam, Co-founder

Udayana Kotta, Co-founder



INDUSTRY PARTNERS

Sony
 Warner Bros.
 Lionsgate
 Paramount

Christie
 NEC
 Coca-Cola

Disney
 Universal
 STX

GDC
 Dolby
 Vistar



FINANCIAL PARTNERS

Bank of America
 Freedom National Bank

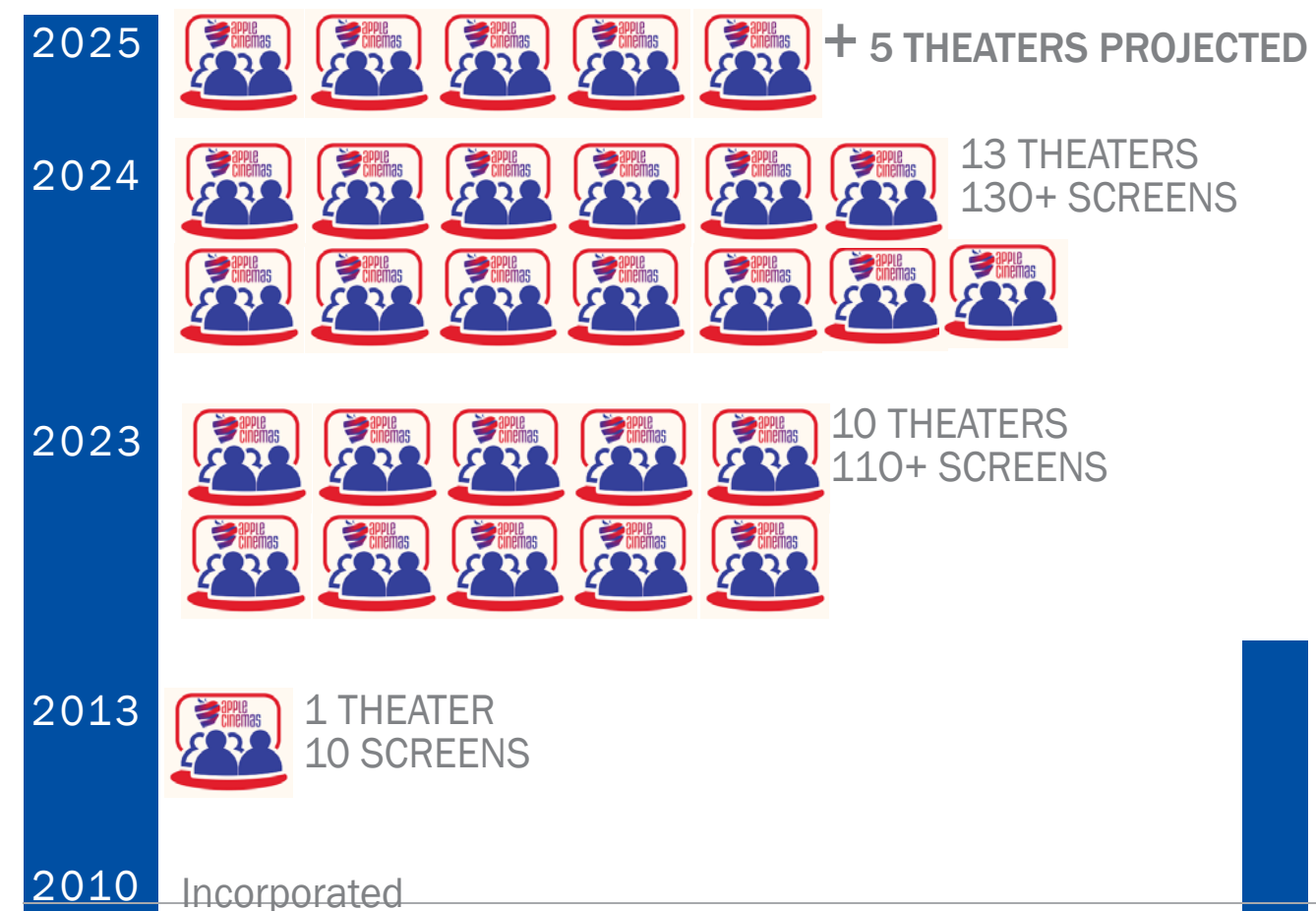


COMPANY OVERVIEW

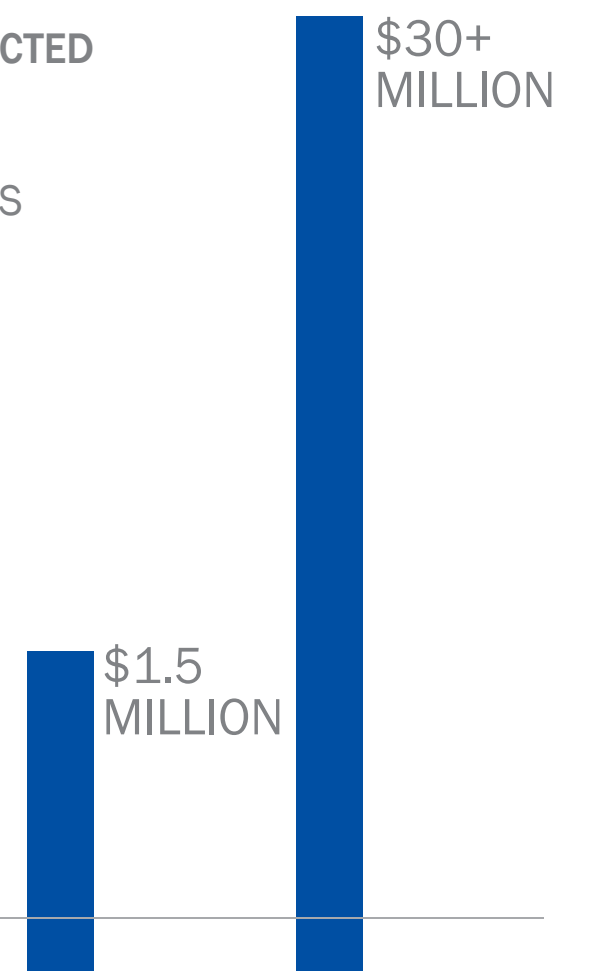
Apple Cinemas, headquartered in Walpole, MA and incorporated in 2010, opened its first theater in 2013 and currently operates 11 locations with 119 screens across six states (MA, CT, RI, NH, ME, NY). We are opening two new locations with 20 screens: one location in Rochester NY and one location in Danville, CA. Additional sites and leases are pending. From the beginning Apple Cinemas has been committed to providing quality state-of-the-art family entertainment, offering varied and dynamic programs that feature blockbusters, art films, and foreign films in several languages. As a premier national entertainment venue, Apple Cinemas is seeking sites for expansion across the United States.

ABOUT BURGER FI: Established in 2011, BurgerFi is a chef-driven concept with responsibly sourced ingredients, including 100% All-Natural Angus Beef with no steroids, antibiotics, growth hormones, chemicals, or additives. BurgerFi also offers vegetarian and vegan burgers along with fresh-cut fries, onion rings, shakes, frozen custards and more. BorgerFi.com

CHAIN GROWTH



REVENUE GROWTH





apple
cinemas

STATE-OF-THE-ART FAMILY ENTERTAINMENT

Apple Cinema, Pittsford, New York - Now Open!



SEEKING SITES FOR NATIONAL EXPANSION

Don Mace, VP of Retail Brokerage
978.828.7383
dmace@keypointpartners.com

